

CATALOGUE 2021

*Misting system
& misting accessories*



Follow us on



Scan and get more info



Tanong Precision Technology Co.,Ltd.

No.6,Feng-Ming Rd., Ta-Ya Dist., Taichung,Taiwan R.O.C.42872

TEL: +886-4-25662106 FAX: +886-4-25662109

E-mail: Info@tanong.com.tw

<http://www.tanong.com.tw>

Get Your Own Diamond

Made in Taiwan

diamond





INDEX

About us

p.1

Misting system

p.6

Misting pumps

NS pump

p.12

NSC pump

p.14

NL pump

p.16

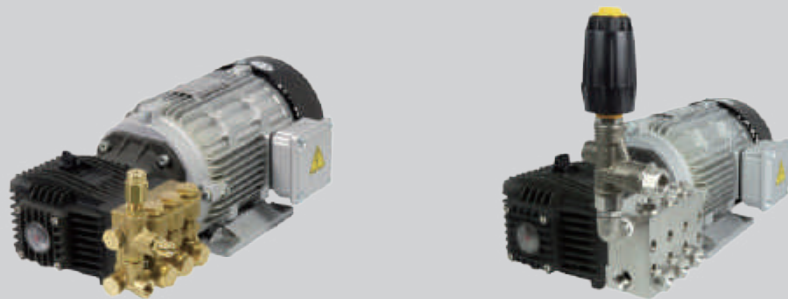


NKM pump

p.18

NKMC pump

p.20

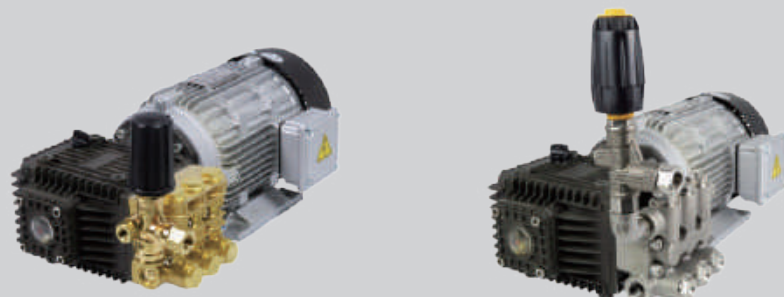


NKL pump

p.22

NKLC pump

p.24



Misting system units

Digi cool

p.26

I-cool

p.28

Mini cool

p.30



Eco cool

p.32

Eco cool SS

p.34

Grand cool

p.36

Grand cool SS

p.38



Mega cool

p.40

Mega cool SS

p.43

Jumbo cool

p.46

Jumbo cool SS

p.48



Air cool

p.50

Air cool Junior

p.52



Misting tower Serie

p. 54



Mist Food

p. 55



Mini cool

p. 58



Fan products

p. 60



Nozzles

p. 62



Piping accessoires



 *Slip lock connectors*

p. 64

 *Nozzle fittings*

p. 79

 *Plug-in couplings*

p. 69

 *Common accessoires*

p. 80

 *Compression fittings*

p. 76

Calculation formulas

p. 82





About us

TANONG introduced its DIAMOND pumps to the market in 1970.

After decades as being a leading agricultural machinery maker, we have successfully grown up as a professional plunger pump and related machinery manufacturer.

The applications of our products and services include high-pressure cleaning, misting, seawater desalination, dust suppression, fire fighting, automatic agricultural spraying,...etc.

We expect ourselves to be a top manufacturer of plunger pumps and related systems around the world.



diamond

We pursue to accomplish the following goals

- All our customers are satisfied with the services we offer.
- The consumers enjoy the experience of using those excellent products we make.
- The dealers make fine profit from selling our goods.

The reliable **R&D**

TANONG is very proud of its powerful R&D Department. We introduce the latest software of 2D/3D and CAD/CAE to raise the efficiency of R&D procedure.

From the concept developing to assembling and testing, our persistence and consistent efforts enable us to produce the most reliable, trustworthy products successfully.

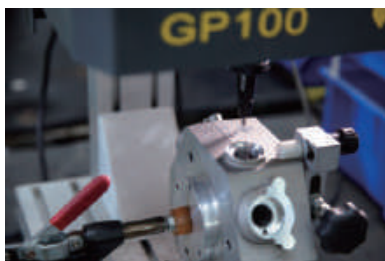




Strict QC

With ISO 9001:2015 certification, our strict QC system, including IQC, PQC and QA, helps us ensure all products meeting your demands.

With coordinate measuring machine and other precision instruments, we guarantee all our products in perfect.



Icons



Cold water H.P. pump/cleaner



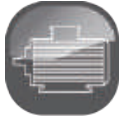
Hot water H.P. pump/cleaner



Max operating pressure



Max flow rate



Electric motor



Electrical power supply



Engine



Fuel power supply



rpm



Volt/Hz



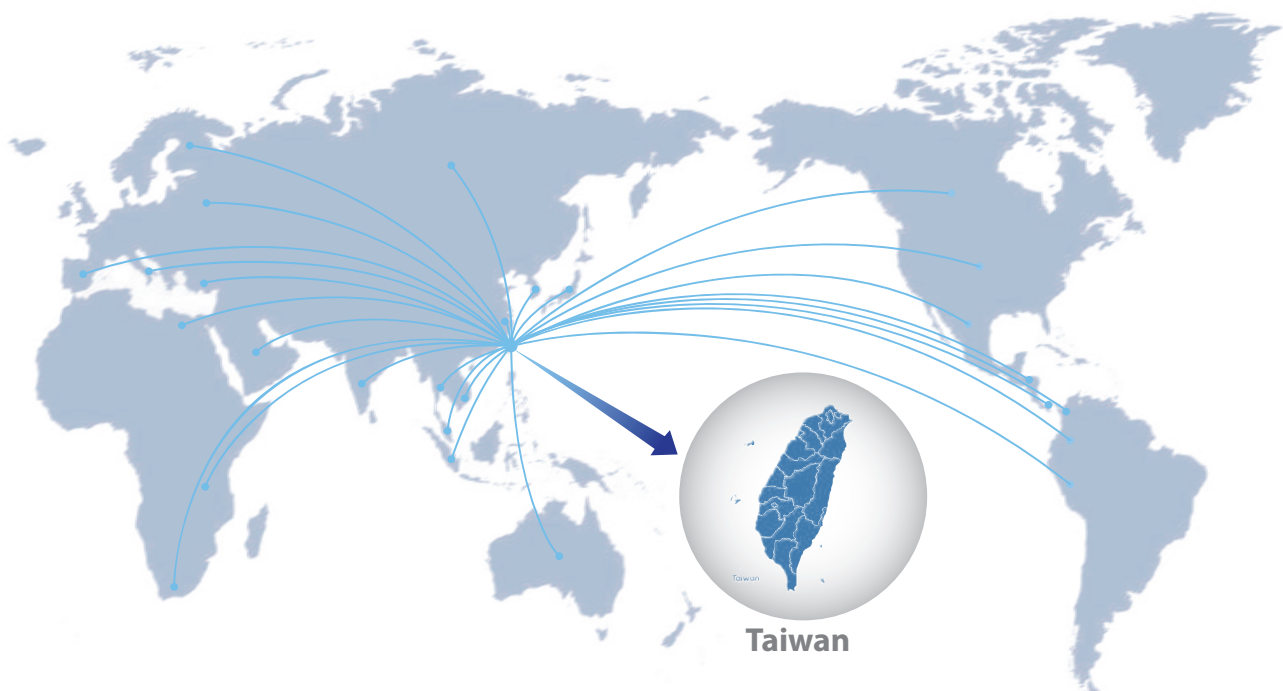
Weight



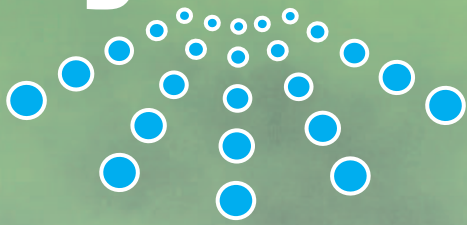
Nozzle No. (Approx)



Fan size

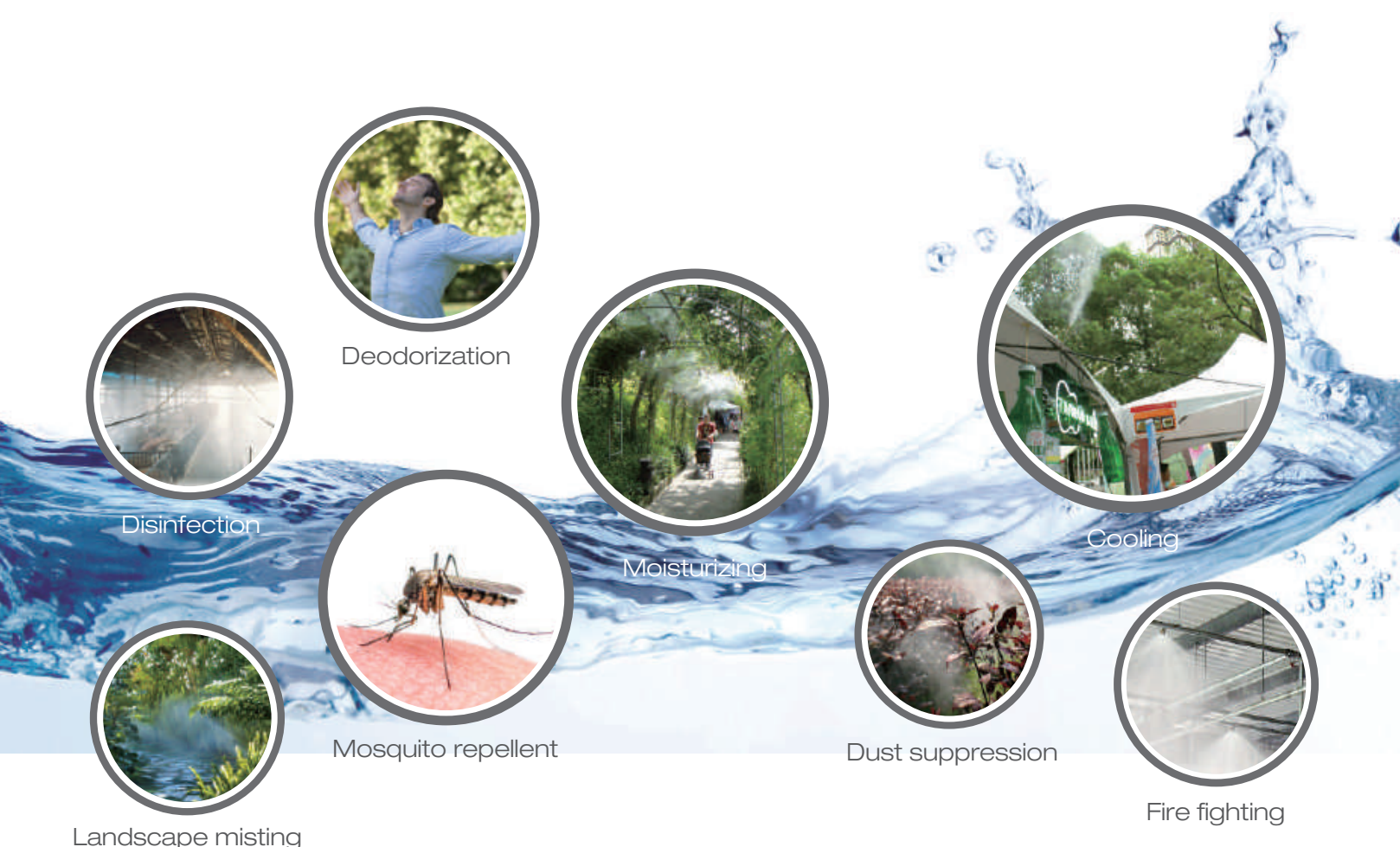


Misting system



diamond
Get Your Own Diamond

Misting system



Disinfection

Deodorization

Moisturizing

Cooling

Mosquito repellent

Dust suppression

Fire fighting

Landscape misting

Application extent

- Outdoor cooling : carnivals, playground, factories, ceremonies, stores.
- Landscape misting : restaurants, TRUSS stages, weddings, parks.
- Humidifying : greenhouses, textile mills, foundries, plastic production.
- Disinfection & deodorization : kindergartens, husbandry, public areas, recycling & wastewater plants.
- Dust suppression : cement plants storageroom, farm.
- Fire fighting : file rooms, control rooms, paint factories, boat fire control.

Misting system



Humidification and Cooling

Misting systems include a length of tubing attached to, suspended from a structure, or incorporated into a fan, specially designed fog nozzles, and a high pressure pump designed to increase the water pressure to 1,000 pounds per square inch (PSI).

At this pressure, the water is atomized into micron size droplets (average droplet size is 10 micron) that flash evaporate and create significant temperature reduction.



Dust suppression

Fog works as a dust suppressant due to the small droplet size. This is a similar size to the dust particle, enabling the two to stick together when they collide.

Typically, several dust particles adhere to the water droplet. As a result, the overall weight of the agglomerate becomes large enough to fall out of the air, removing the respirable airborne dust with it.



Misting system



Landscape misting

Extreme fine water particles float in the air becomes the natural scenery of a white world.

The artificial fog can really pack in a great number of people by its special effects and is able to produce the massive anions, making the air anion concentration level 1,000 to 5,000 times higher than a residential area in the city.



Disinfection & Deodorization

Using the misting system, low-pH disinfectant can be added, spread quickly and evenly, and penetrate into the space to achieve a comprehensive epidemic prevention target.

For example: SARS and dengue fever and other environmental disinfection.

In addition, to remove odorous molecules, non-toxic chemical neutralizers can be added to the fogging system or pure plant essential oils such as eucalyptus and peppermint essential oils can be added.

After spraying, the tiny molecules can remove odorous molecules.



Misting system



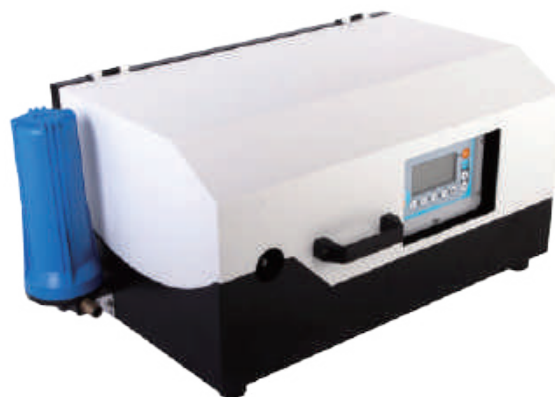
Mosquito repellent

The water particles generated by the micro-mist system float in large numbers in the planting rooms of the park. These tiny water mist particles will condense on the wings of the mosquitoes and flies, causing the mosquitoes and flies to lose their ability to fly, and finally land on the ground, causing them to lose their bite possibility.

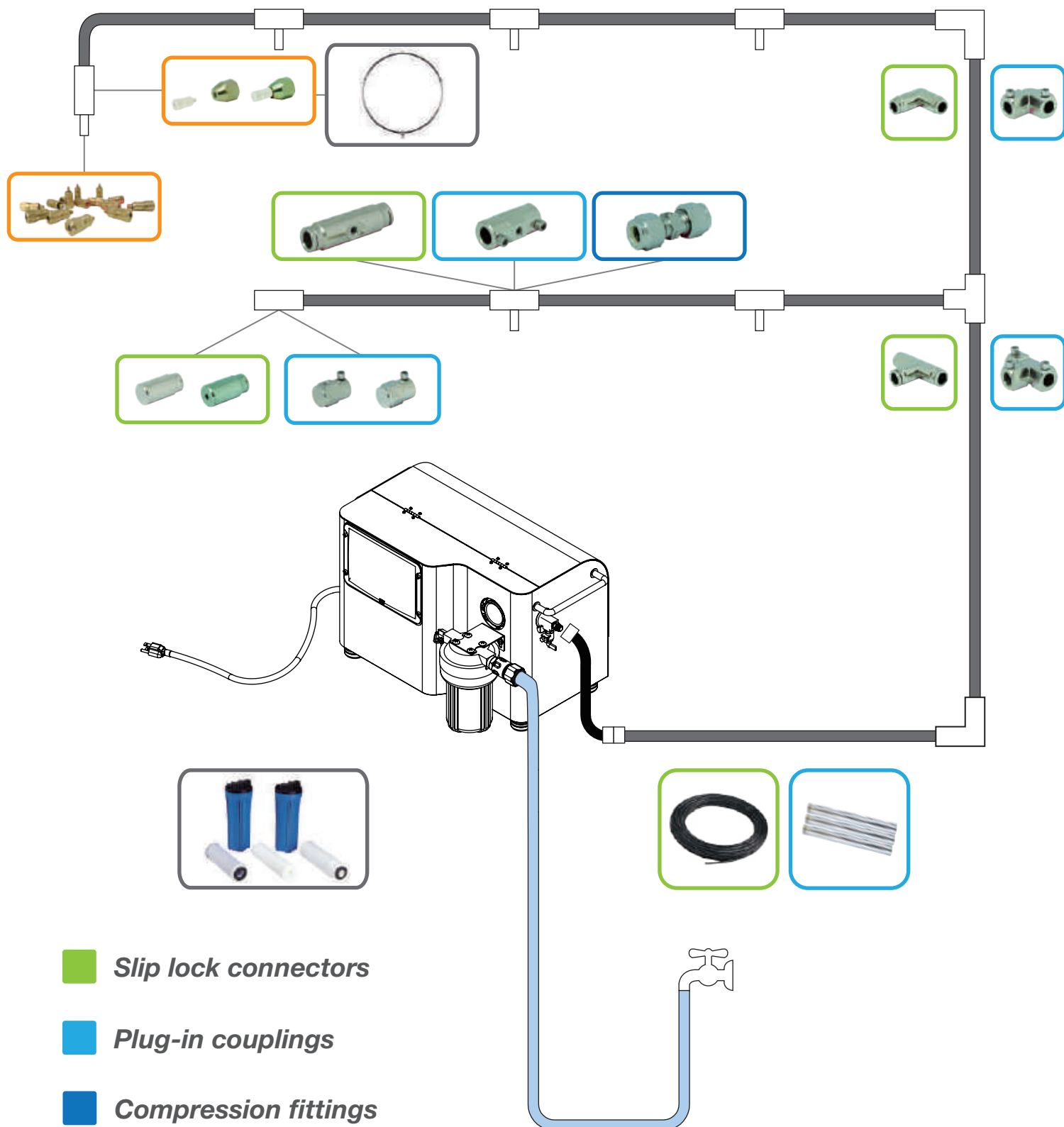


Fire fighting

Water misting system reduced fire protection water demands by up to 90% water conservation, compared to the foam and wet system water demands.



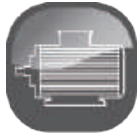
Misting system



- Slip lock connectors*
- Plug-in couplings*
- Compression fittings*
- Nozzle fittings*
- Common accessoires*

NS-pump

Misting pump



Details of motor overload protector to limit the winding temperature to safe values and prevent destruction of the motor.



Details of die-casting aluminum oil chamber, great resistance to corrosion.

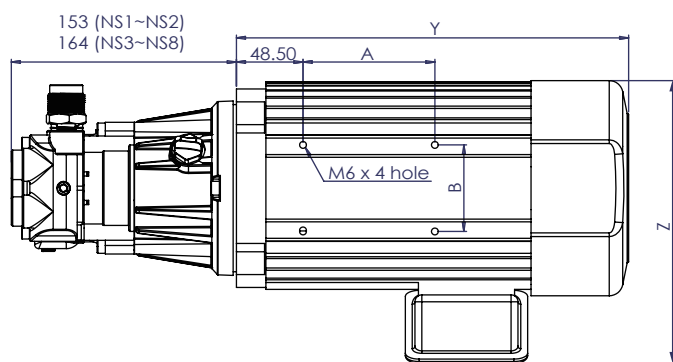
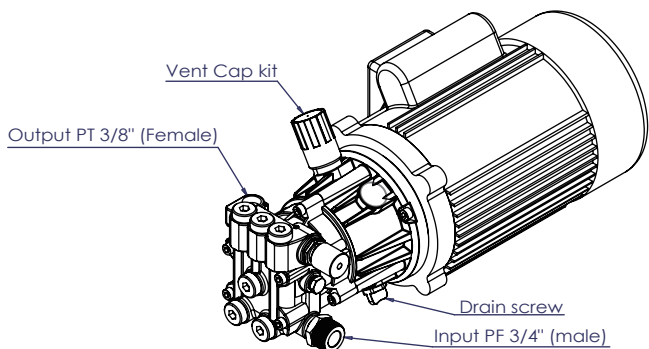
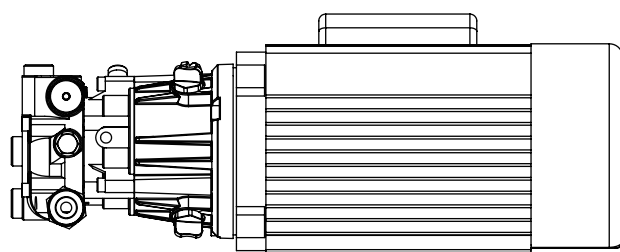
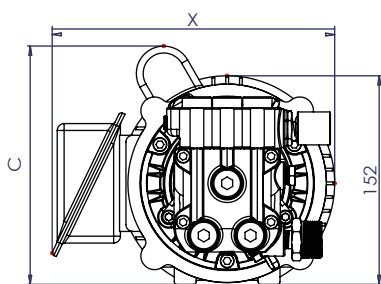


Details of forging manifold with the built-in pressure regulator.

Features

1. Direct-driven pump : The pump is directly driven by a motor to reduce its size.
2. Brass Manifold : Better corrosion resistance that extends the pump's life.
3. Stable Operation : The triplex plunger design secures the stability of the pressure output.
4. Noiseless Design : The precise design of parts decrease the operating noise.
5. Pressure Regulator : Both regulating and stabilizing functions ensure consistency in its operation.
6. Overload Protector : Automatic shutdown when current is overloaded to prevent damage to the motor.
7. TEFC Pump Motor : Totally enclosed motor ensures electric safety from moisture.

Dimensions



Size comparison table

Model	X	Y	Z	A	B	C
NS1	166	185.5	126	100	45	128.5
NS2	200	220	156	96	63	152.5
NS3	200	228.5	156	96	63	173
NS5	200	228.5	156	96	63	173
NS6	200	275	156	96	63	173
NS8	200	295	156	96	63	173

Unit: mm

Package dimensions



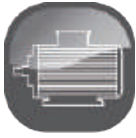
Model	LxWxH
NS1,NS2	420x250x210
NS3~NS8	500x260x230

Unit: mm

Model								
	l/min	psi	bar	Hp	rpm	Volt/Hz	kg	0.15 mm
NS1	1.1/1.3	1000	70	1/3	1450/1750	110V/220V 50/60Hz	11	14/16
NS2	2.0/2.5			1/2	1450/1750	110V/220V 50/60Hz	12.3	25/31
NS3	3.2/3.8			3/4	1450/1750	110V/220V 50/60Hz	15.6	40/48
NS5	4.0/4.8			1	1450/1750	110V/220V 50/60Hz	17.1	50/61
NS6	5.2/6.3			1.5	1450/1750	220V 50/60Hz	18.6	66/80
NS8	6.8/8.2			2	1450/1750	220V 50/60Hz	21.1	86/104

NSC-pump stainless steel version

Misting pump



Details of motor overload protector to limit the winding temperature to safe values and prevent destruction of the motor.



Details of die-casting aluminum oil chamber, great resistance to corrosion.

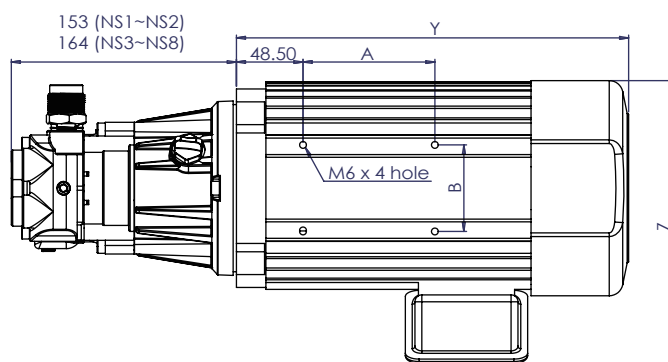
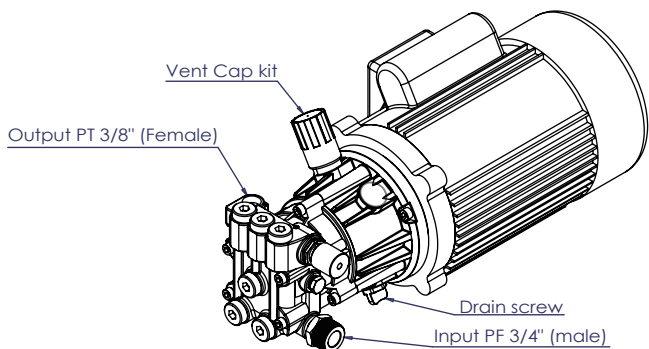
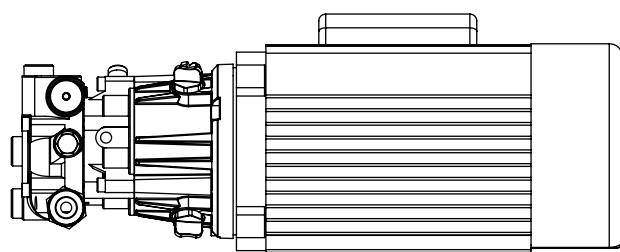
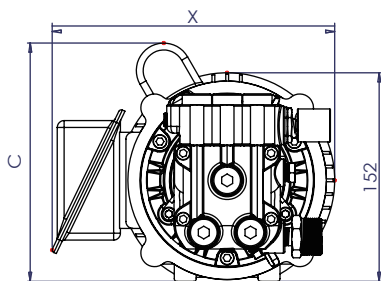


Details of SS investment casting manifold with the built-in pressure regulator.

Features

1. SS304 pump head can stand high corrosive chemicals such as peracetic acid or hypochlorous acid.
2. Direct-driven pump : The pump is directly driven by a motor to reduce its size.
3. SS304 Manifold : Better corrosion resistance that extends the pump's life.
4. Stable Operation : The triplex plunger design secures the stability of the pressure output.
5. Noieseless Design : The precise design of parts decrease the operating noise.
6. Pressure Regulator : Both regulating and stabilizing functions ensure consistency in its operation.
7. Overload Protector : Automatic shoutdown when current is overloaded to prevent damage to the motor.
8. TEFC Pump Motor : Totally enclosed motor ensures electric safety from moisture.

Dimensions



Size comparison table

Model	X	Y	Z	A	B	C
NS1	166	185.5	126	100	45	128.5
NS2	200	220	156	96	63	152.5
NS3	200	228.5	156	96	63	173
NS5	200	228.5	156	96	63	173
NS6	200	275	156	96	63	173
NS8	200	295	156	96	63	173

Unit: mm

Package dimensions



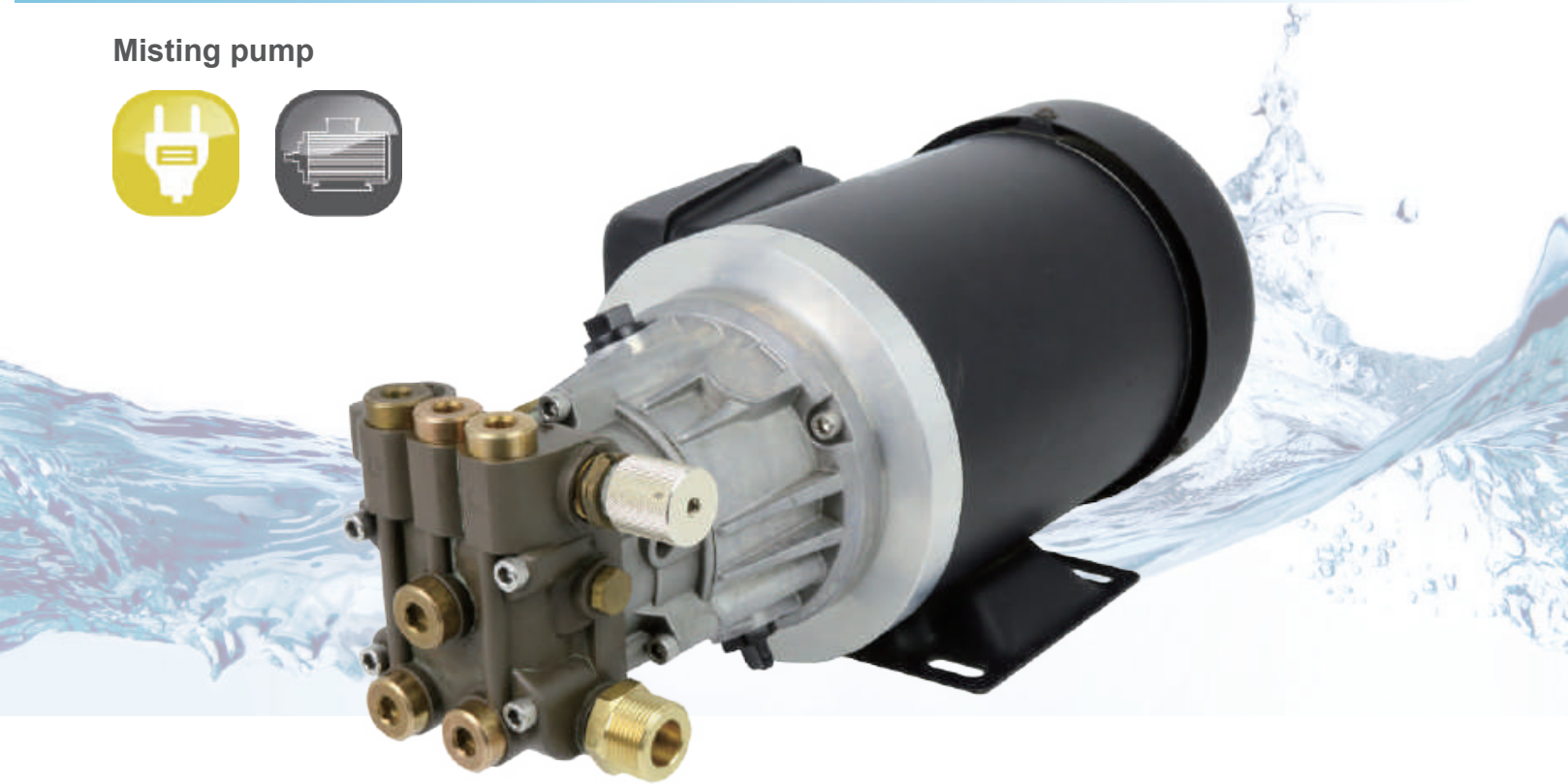
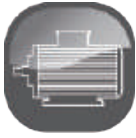
Model	LxWxH
NS1,NS2	420x250x210
NS3~NS8	500x260x230

Unit: mm

Model								
	l/min	psi	bar	Hp	rpm	Volt/Hz	kg	0.15 mm
NSC 1	1.1/1.3	1000	70	1/3	1450/1750	110V/220V 50/60Hz	11	14/16
NSC 2	2.0/2.5			1/2	1450/1750	110V/220V 50/60Hz	12.3	25/31
NSC 3	3.2/3.8			3/4	1450/1750	110V/220V 50/60Hz	15.6	40/48
NSC 5	4.0/4.8			1	1450/1750	110V/220V 50/60Hz	17.1	50/61
NSC 6	5.2/6.3			1.5	1450/1750	110V/220V 50/60Hz	18.6	66/80
NSC 8	6.8/8.2			2	1450/1750	110V/220V 50/60Hz	21.1	86/104

NL-pump

Misting pump



Details of motor overload protector to limit the winding temperature to safe values and prevent destruction of the motor.



Details of die-casting aluminum oil chamber, great resistance to corrosion.

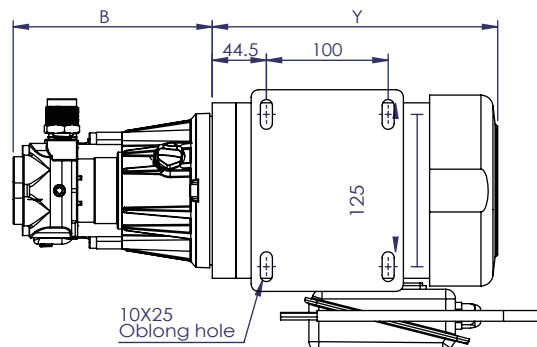
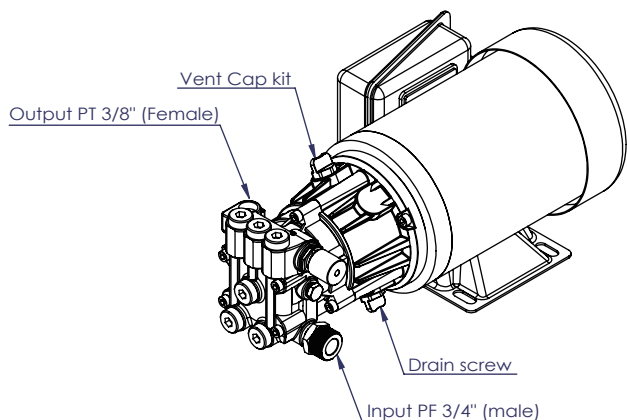
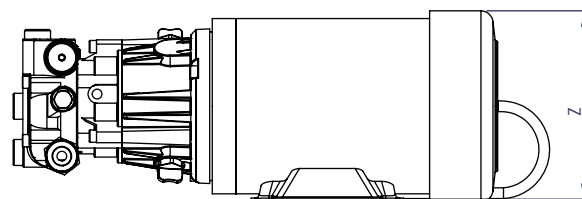
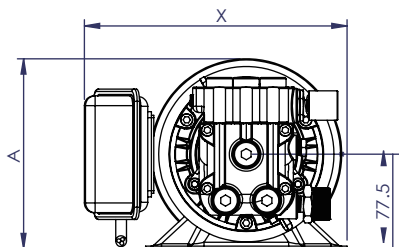


Details of POM manifold with the built-in pressure regulator.

Features

1. Direct-driven pump : The pump is directly driven by a motor to reduce its size.
2. Brass Manifold : Better corrosion resistance that extends the pump's life.
3. Stable Operation : The triplex plunger design secures the stability of the pressure output.
4. Noieseless Design : The precise design of parts decrease the operating noise.
5. Pressure Regulator : Both regulating and stabilizing functions ensure consistency in its operation.
6. Overload Protector : Automatic shoutdown when current is overloaded to prevent damage to the motor.
7. TEFC Pump Motor : Totally enclosed motor ensures electric safety from moisture.

Dimensions



Size comparison table

Model	X	Y	Z	A	B
NS1	201	158	125	126	153
NS2	201	185	125	126	153
NS3	216	234.5	155	156	164
NS5	216	234.5	155	156	164

Unit: mm

Package dimensions

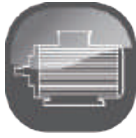
Model	LxWxH
NL1,NL2	390x250x180
NL3,NL5	450x270x210

Unit: mm

Model								
	l/min	psi	bar	Hp	rpm	Volt/Hz	kg	0.15 mm
NL 1	1.1/1.3	725	50	1/4	1450/1750	100V~240V 60Hz	10.6	14/16
NL 2	2.0/2.5			1/3	1450/1750	100V~240V 50Hz	11.9	25/31
NL 3	3.2/3.8			1/2	1450/1750	100V~240V 60Hz	13.3	40/48
NL 5	4.0/4.8			3/4	1450/1750	100V~240V 50Hz	16	50/61

NKM-pump

Misting pump



Details of forging manifold with an additional built-in pressure regulator.



Details of die-casting aluminum crank case, great resistance to corrosion. Crank shaft design with durable connecting rods. Extra-thick ceramic plunger bushes.

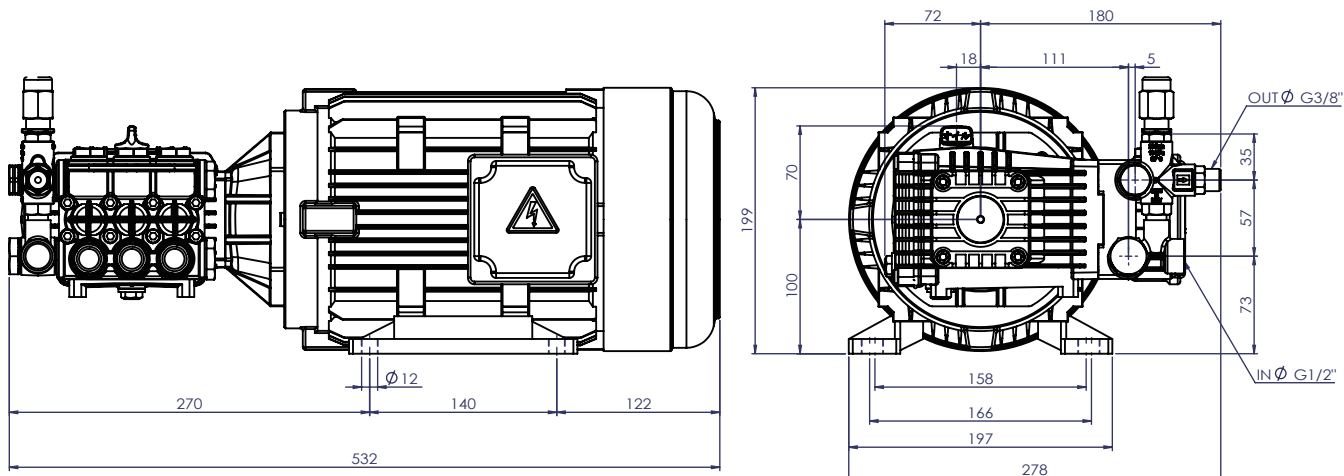


Details of IP54 motor with overload protector. Die-casting aluminum. IE1 or IE3 are available.

Features

1. Direct-driven pump : The pump is directly driven by a motor to reduce its size.
2. Brass Manifold : Better corrosion resistance that extends the pump's life.
3. Stable Operation : The triplex plunger design secures the stability of the pressure output.
4. Noiseless Design : The precise design of parts decrease the operating noise.
5. Pressure Regulator : Both regulating and stabilizing functions ensure consistency in its operation.
6. Overload Protector : Automatic shutdown when current is overloaded to prevent damage to the motor.
7. TEFC Pump Motor : Totally enclosed motor ensures electric safety from moisture.

Dimensions



Package dimensions



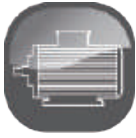
Model	LxWxH
NKM-serie	620x360x285

Unit: mm

Model								
	l/min	psi	bar	Hp	rpm	Volt/Hz	kg	0.15 mm
NKM-12S	10.7	1000	70	2	1750	100V~240V 60Hz	7.5	136
NKM-12F	11.1			2	1450	100V~240V 50Hz	7.5	141
NKM-16S	16			3	1750	100V~240V 60Hz	7.5	203
NKM-16F	16			3	1450	100V~240V 50Hz	7.5	203

NKMC-pump stainless steel version

Misting pump



Pump head made of stainless steel which can stand different kinds of acid and alkali chemical.



Details of die-casting aluminum crank case, great resistance to corrosion. Crank shaft design with durable connecting rods. Extra-thick ceramic plunger bushes.

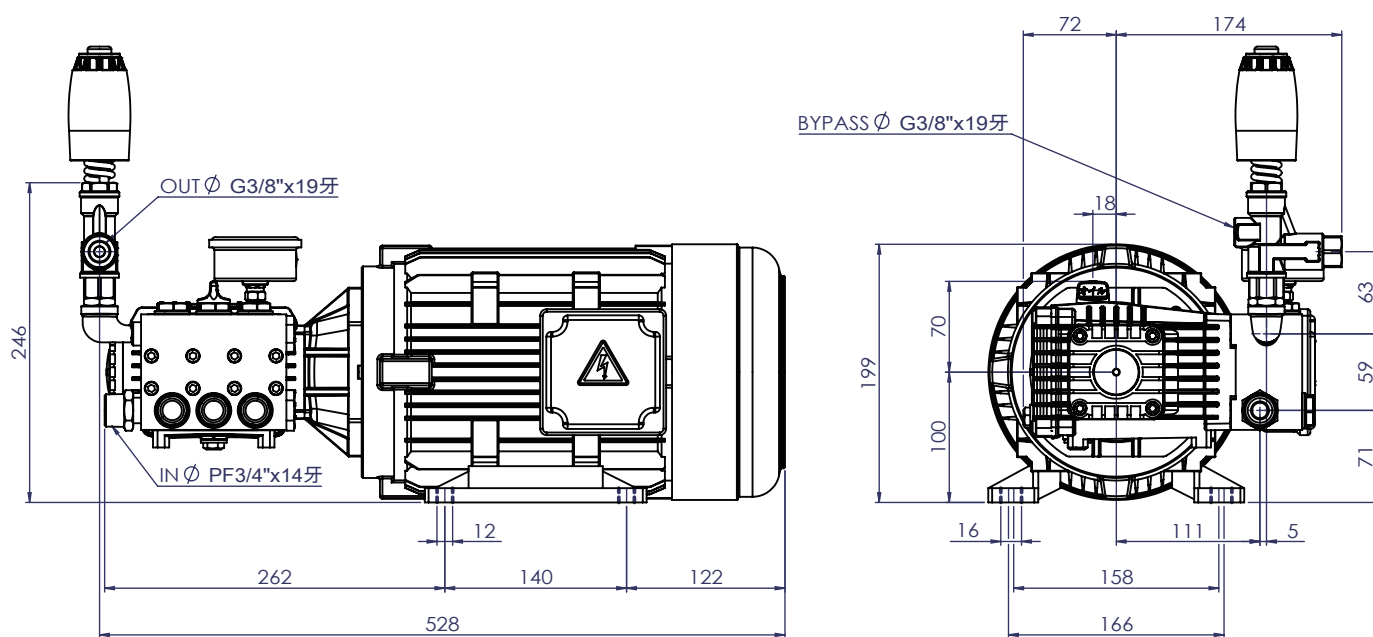


Details of IP54 motor with overload protector. Die-casting aluminum. IE1 or IE3 are available.

Features

1. Direct-driven pump : The pump is directly driveby a motor to reduce its size.
2. SS304 Manifold : Better corrosion resistance extends the pump's life.
3. Stable Operation : The Triplex plunger design secures the stability of the pressure output.
4. Noieseless Design : The precise design of parts decrease the operating noise.
5. Stainless Pressure Regulator : Both regulating and stabilizing functions ensures consistency in its operation.
6. Overload Protector : Automatic shoutdown when current is overloaded to prevent damage to the motor.
7. TEFC Pump Motor : The totally enclosed motor ensures electric safety from moisture.

Dimensions



Package dimensions

Model	LxWxH
NKMC-serie	620x360x285

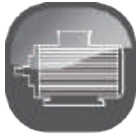
Unit: mm

P.S. Regulator can be changeable at request.

Model								
	l/min	psi	bar	Hp	rpm	Volt/Hz	kg	0.15 mm
NKMC-12S	10.7	1000	70	2	1750	100V~240V 60Hz	7.5	136
NKMC-12F	11.1			2	1450	100V~240V 50Hz	7.5	141
NKMC-16S	16			3	1750	100V~240V 60Hz	7.5	203
NKMC-16F	16			3	1450	100V~240V 50Hz	7.5	203

NKL-pump

Misting pump



Details of forging manifold with the built-in pressure regulator.



Details of die-casting aluminum crank case, great resistance to corrosion. Crank shaft design with durable connecting rods. Extra-thick ceramic plunger bushes.

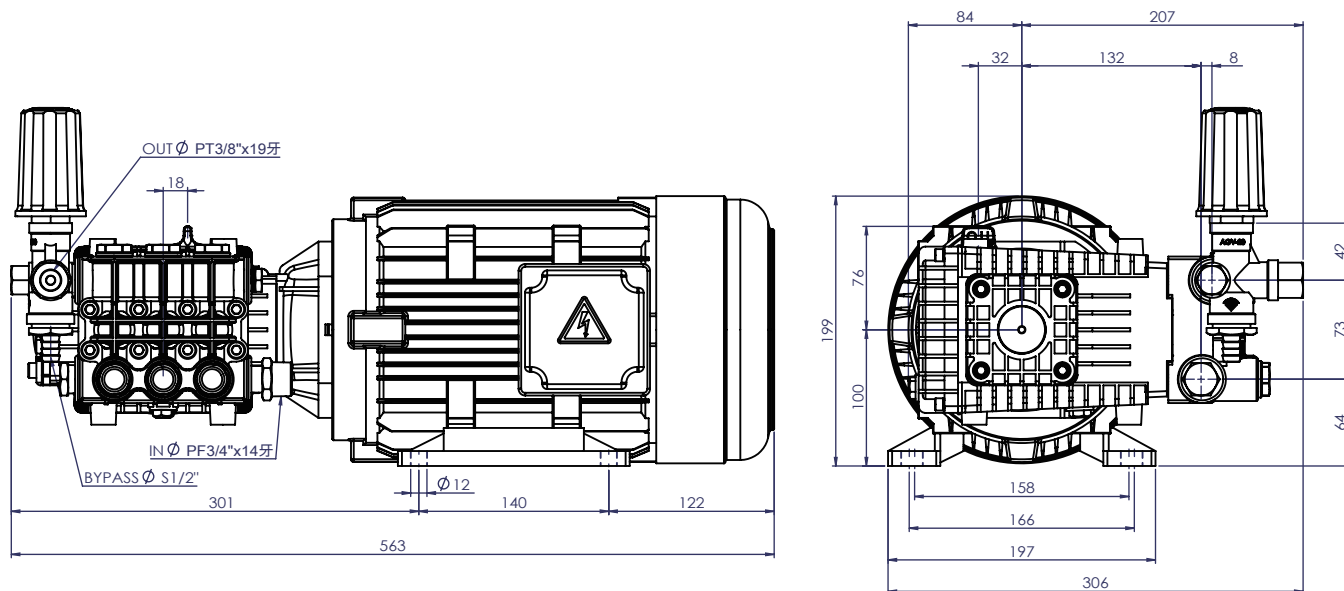


Details of IP54 motor with overload protector. Die-casting aluminum. IE1 or IE3 are available.

Features

1. Direct-driven pump : The pump is directly driven by a motor to reduce its size.
2. Brass Manifold : Better corrosion resistance that extends the pump's life.
3. Stable Operation : The triplex plunger design secures the stability of the pressure output.
4. Noiseless Design : The precise design of parts decrease the operating noise.
5. Pressure Regulator : Both regulating and stabilizing functions ensure consistency in its operation.
6. Overload Protector : Automatic shutdown when current is overloaded to prevent damage to the motor.
7. TEFC Pump Motor : Totally enclosed motor ensures electric safety from moisture.

Dimensions



Package dimensions



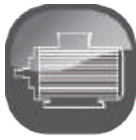
Model	LxWxH
NKL-serie	620x360x285

Unit: mm

Model								
	l/min	psi	bar	Hp	rpm	Volt/Hz	kg	0.15 mm
NKL-20S	21.9	1000	70	4	1750	100V~240V 60Hz	11.8	278
NKL-20F	21.5			4	1450	100V~240V 50Hz	11.8	273
NKL-25S	25.9			5	1750	100V~240V 60Hz	11.8	329
NKL-25F	24.8			5	1450	100V~240V 50Hz	11.8	315

NKLC-pump stainless steel version

Misting pump



Pump head made of stainless steel which can stand different kinds of acid and alkali chemical.

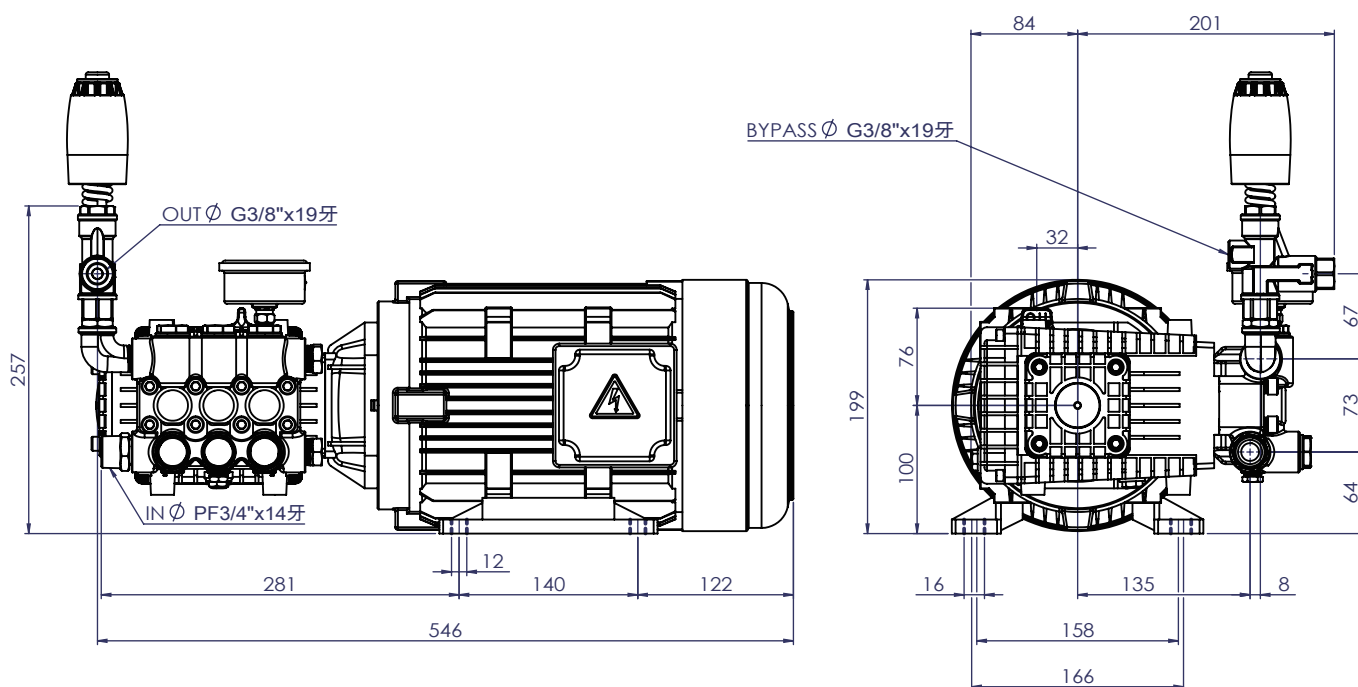
Details of die-casting aluminum crank case, great resistance to corrosion. Crank shaft design with durable connecting rods. Extra-thick ceramic plunger bushes.

Details of IP54 motor with overload protector. Die-casting aluminum. IE1 or IE3 are available.

Features

1. Direct-driven pump : The pump is directly driven by a motor to reduce its size.
2. Stainless steel (SS304) pump head can stand high corrosive chemicals such as peracetic acid or hypochlorous acid.
3. Stable Operation : The triplex plunger design secures the stability of the pressure output.
4. Noiseless Design : The precise design of parts decrease the operating noise.
5. Stainless Pressure Regulator : Both regulating and stabilizing functions ensure consistency in its operation.
6. Overload Protector : Automatic shutdown when current is overloaded to prevent damage to the motor.
7. TEFC Pump Motor : Totally enclosed motor ensures electric safety from moisture.

Dimensions



Package dimensions



Model	LxWxH
NKLC-serie	620x360x285

Unit: mm

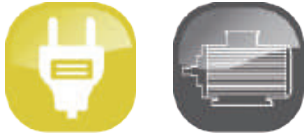
P.S. Regulator can be changeable at request.

Model								
	l/min	psi	bar	Hp	rpm	Volt/Hz	kg	0.15 mm
NKLC-20S	21.9	1000	70	4	1750	100V~240V 60Hz	11.8	278
NKLC-20F	21.5			4	1450	100V~240V 50Hz	11.8	273
NKLC-25S	25.9			5	1750	100V~240V 60Hz	11.8	329
NKLC-25F	24.8			5	1450	100V~240V 50Hz	11.8	315

Digi-cool



DIY Misting kit



Light plastic design with a handle.




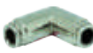




Touch panel for 4 pre-programmed modes .



AC/DC Adapter °

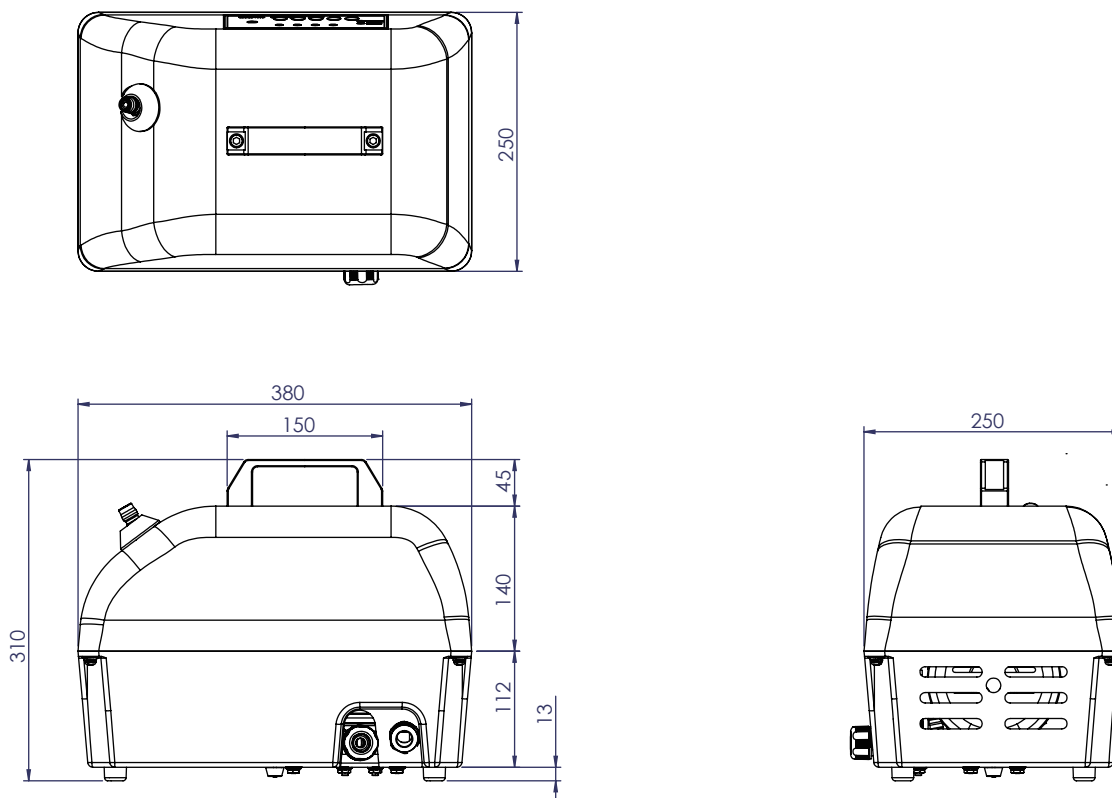
Standard accessories

- | | | | |
|---------------------------------------|---|----------------------------------|---|
| 1. SL-1 - Slip lock connector x 9 PCS |  | 5. SL-16 - Tubing cutter x 1 PCS |  |
| 2. SL-8 - Slip lock connector x 1 PCS |  | 6. Cable tie x 10 PCS | |
| 3. SL-9 - Slip lock connector x 4 PCS |  | 7. Misting nozzles x 10 PCS |  |
| 4. SL-14 - Nylon pipe x 10 M |  | | |






Features

1. Light plastic case design.
2. Digital control Panel with 4 pre-programmed modes.
3. Drought Switch : Automatic shutdown and alarm when water supply is interrupted to protect the pump.
4. Solenoid valve : Stop water inlet during downtime to increase the life of the pump.
5. Optional Pressure Auto-Release : Discharges pressure inside the pipe to prevent the nozzle from dripping .
6. DC Pump Motor : Totally enclosed motor ensures electric safety from moisture.
7. Overload projector : Automatic shutdown when the current is overloaded to prevent damage to the pump.

Dimensions



Optional accessories








- 1.SS-22 - Stainless steel pipe (3/8" x 0.5M) x 12 PCS 
- 2.SS-2 - Misting coupling x9 PCS 
- 3.SS-17 - End plug x1 PCS 
- 4.SS-6 - Misting coupling x2 PCS 
- 5.C18-Misting coupling x1 PCS
- 6.SL-5 - Slip lock connector x1 PCS 

Package dimensions



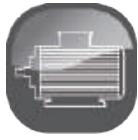
Model	LxWxH
Digi-cool	415x315x345

Unit: mm

Model								
	l/min	psi	bar	W	rpm	Volt/Hz	kg	0.15 mm
Digi-cool	0.5	725	50	12V DC 150W	100V~240V 50/60Hz	1050	8.2	6

i-cool

Systematic misting machine



Inlet water, details of low pressure solenoid valve and garden hose adaptor.



Details of E1 control panel with 4 pre-programmed misting modes.

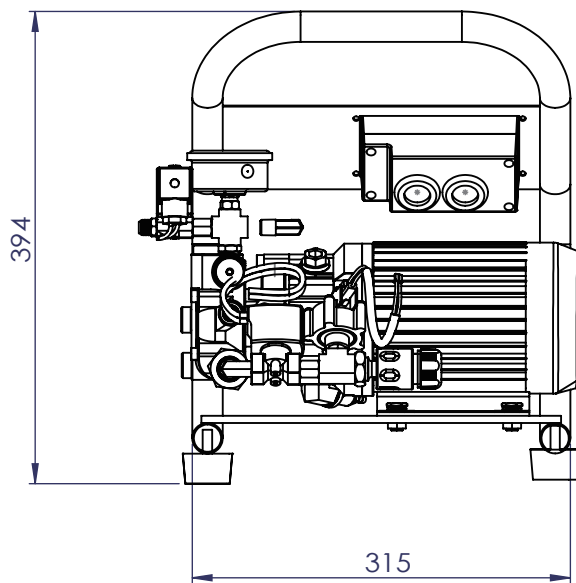
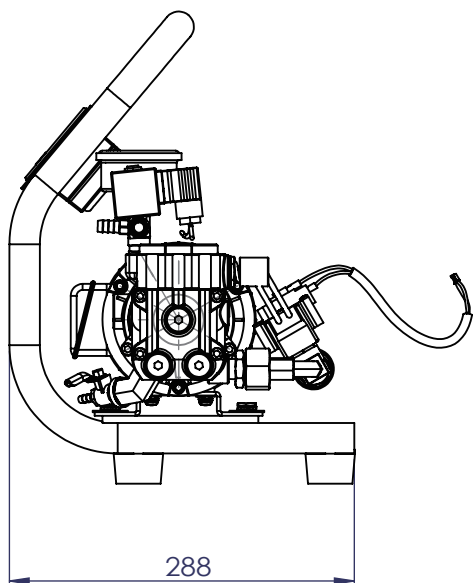


Details of base frame and anti-vibration mount.

Features

1. Light frame design.
2. Digital control Panel : 4 pre-programmed modes.
4. Stable Operation : The triplex plunger design secures the stability of the pressure output.
5. Pressure Regulator : Both regulating and stabilizing functions ensure consistency in its operation.
6. TEFC Pump Motor : Totally enclosed motor ensures electric safety from moisture.
7. Overload Protector : Automatic shutdown when current is overloaded to prevent damage to the motor.

Dimensions



Package dimensions



Model	LxWxH
i-cool	420x320x400

Unit: mm

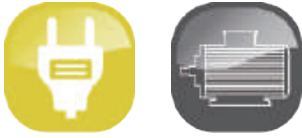
P.S.

- 1.NS pumps can be replaced by NL pumps at request.
- 2.When an NL pump is applied , the spec. can be referred back to NL pumps.

Model								
	l/min	psi	bar	Hp	rpm	Volt/Hz	kg	0.15 mm
i-cool 1	1.1/1.3	1000	70	1/3	1450/1750	110V/220V 50/60Hz	16	14/16
i-cool 2	2.1/2.5			1/2	1450/1750	110V/220V 50/60Hz	17.5	25/31
i-cool 3	3.2/3.9			3/4	1450/1750	110V/220V 50/60Hz	21	40/48

Mini-cool

Systematic misting machine



Details of E1 control panel with 4 pre-programmed misting modes.



Water filtering system used to prevent nozzles from clogging.

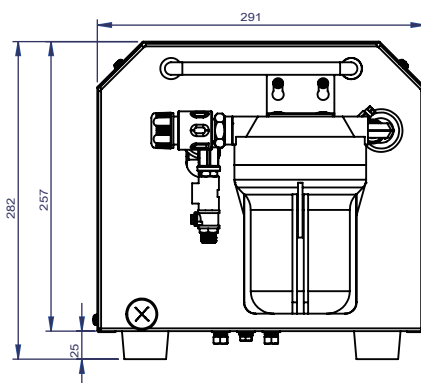
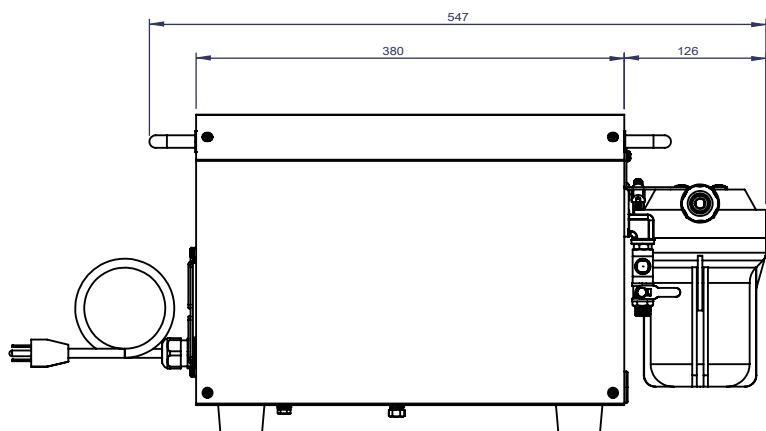
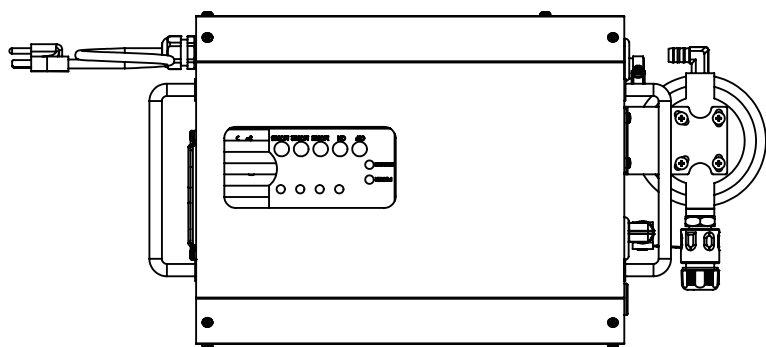


Detail of motor cooling fans and handles for easy transportation.

Features

1. Classic iron casing design.
2. E1 control panel with 4 pre-programmed misting modes.
3. Drought Switch : automatic shutdown and alarm when water supply is interrupted to protect the pump.
4. Solenoid valve : stop water inlet during downtime to increase the life of the pump.
5. Optional Pressure Auto-Release : Discharges pressure inside the pipe to prevent the nozzle from dripping .
6. TEFC Pump Motor : Totally enclosed motor ensures electric safety from moisture.
7. Overload Protector : Automatic shutdown when current is overloaded to prevent damage to the motor.

Dimensions



Package dimensions



Model	LxWxH
Mini-cool	610x330x330

Unit: mm

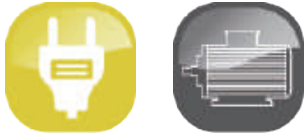
P.S.

- 1.NS pumps can be replaced by NL pumps at request.
- 2.When an NL pump is applied , the spec. can be referred back to NL pumps.

Model								
	l/min	psi	bar	Hp	rpm	Volt/Hz	kg	0.15 mm
Mini-cool 1	1.1/1.3	1000	70	1/3	1450/1750	100~240V 50Hz/60Hz	21.3	14/16
Mini-cool 2	2.0/2.5			1/2	1450/1750	100~240V 50Hz/60Hz	22.7	25/31

Eco-cool

Systemic misting machine



Clamshell cover for easy inspection and maintenance.



Details of toggle latch on the metal casing for safety purpose.



Details of motor overload protector to limit the winding temperature to safe values and prevent destruction of the motor.



Water filtering system used to prevent nozzles from clogging.

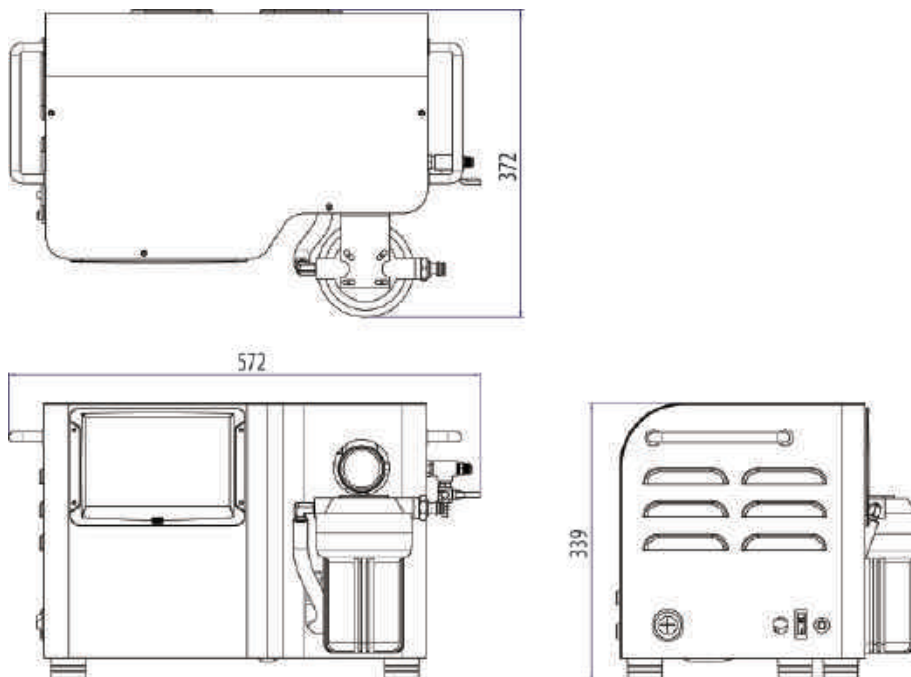


Details of E2 control panel with integrated humidity and temperature sensor inside for management of pause/work times.

Features

1. Reminder of 300hrs. maintenance interval.
2. Automatic counting for total running hrs.
3. Infrared Transmission Remote Control.
4. Temperature & Humidity Monitoring.
5. LCD Control Panel : Programmable from seconds to weeks.
6. Optional Pressure Auto-Release : Pressure auto-release discharges pressure inside the pipe to prevent the nozzle from dripping.
7. Filtration : Filtering residue to reduce blockages in the nozzle.
8. Solenoid Valve : Stop water inlet during downtime to increase the life of the pump.
9. Overload Protector : Automatic shoutdown when current is overloaded to prevent damage to the pump.
10. TECF Pump Motor : Totally enclosed motor ensures electric safety from moisture.

Dimensions



Optional

E2 control panel with extension cable is available at 5,10,20m.



Package dimensions



Model	LxWxH
Eco-cool	630x420x380

Unit: mm

P.S.

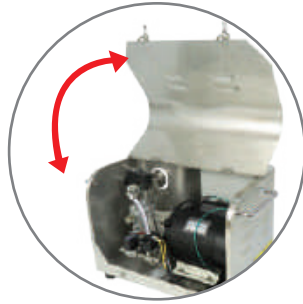
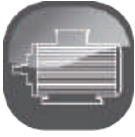
- 1.NS pumps can be replaced by NL pumps at request.
- 2.When an NL pump is applied , the spec. can be referred back to NL pumps.

Model								
	l/min	psi	bar	Hp	rpm	Volt/Hz	kg	0.15 mm
Eco-cool 1	1.1/1.3	1000	70	1/3	1450/1750	110V/220V 50/60Hz	24	14/16
Eco-cool 2	2.0/2.5			1/2	1450/1750	110V/220V 50/60Hz	24.5	25/31
Eco-cool 3	3.2/3.8			3/4	1450/1750	110V/220V 50/60Hz	27.5	40/48
Eco-cool 5	4.0/4.8			1	1450/1750	110V/220V 50/60Hz	28.5	50/61

Eco-cool-SS

stainless steel version

Systematic misting machine



Stainless clamshell cover for easy inspection and maintenance.



Details of toggle latch on the metal casing for safety purpose.



Details of motor overload protector to limit the winding temperature to safe values and prevent destruction of the motor.



Details of E2 control panel with integrated humidity and temperature sensor inside for management of pause/work times.

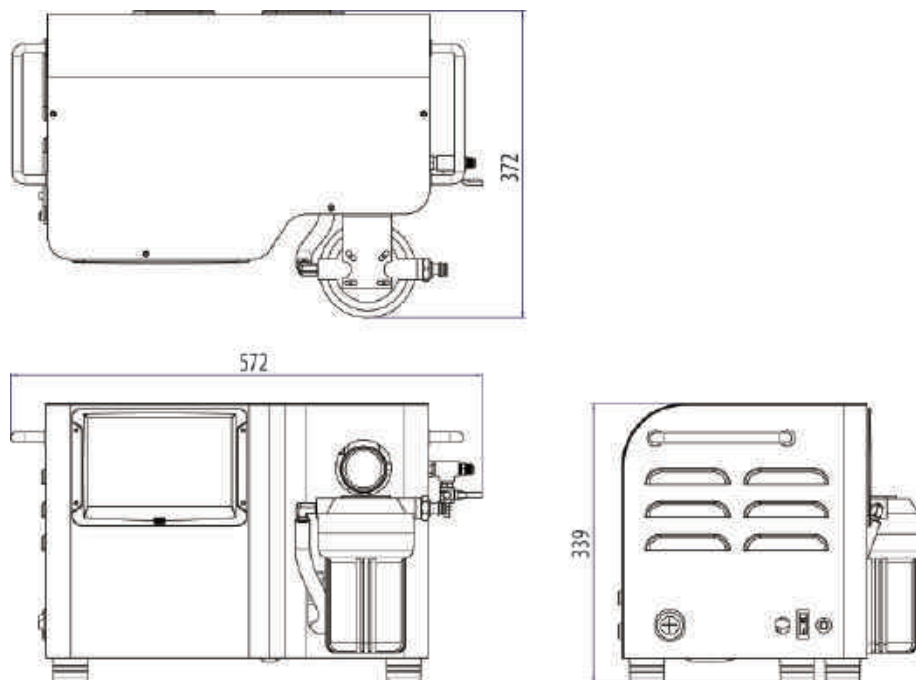


Pump head and internal components made of stainless steel which can stand different kinds of chemical.

Features

1. Reminder of 300hrs. maintenance interval.
2. Automatic counting for total running hrs.
3. Infrared Transmission Remote Control.
4. Temperature & Humidity Monitoring.
5. LCD Control Panel : Programmable from seconds to weeks.
6. Optional Pressure Auto-Release : Pressure auto-release discharges pressure inside the pipe to prevent the nozzle from dripping.
7. Filtration : Filtering residue to reduce blockages in the nozzle.
8. Solenoid Valve : Stop water inlet during downtime to increase the life of the pump.
9. Overload Protector : Automatic shutdown when current is overloaded to prevent damage to the pump.
10. TECF Pump Motor : Totally enclosed motor ensures electric safety from moisture.

Dimensions



Optional

E2 control panel with extension cable is available at 5,10,20m.



Package dimensions



Model	LxWxH
Eco-cool-SS	630x420x380

Unit: mm

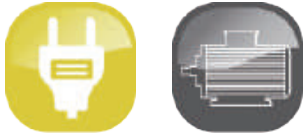
P.S.

- 1.NS pumps can be replaced by NL pumps at request.
- 2.When an NL pump is applied , the spec. can be referred back to NL pumps.

Model								
	l/min	psi	bar	Hp	rpm	Volt/Hz	kg	0.15 mm
Eco-cool 1	1.1/1.3	1000	70	1/3	110V/220V 50/60Hz	1450/1750	24	14/16
Eco-cool 2	2.0/2.5			1/2	110V/220V 50/60Hz	1450/1750	24.5	25/31
Eco-cool 3	3.2/3.8			3/4	110V/220V 50/60Hz	1450/1750	27.5	40/48
Eco-cool 5	4.0/4.8			1	110V/220V 50/60Hz	1450/1750	28.5	50/61

Grand-cool

Systemic misting machine



Details of water filtering system used to prevent nozzles from clogging and motor overload protector to limit the winding temperature to safe values and prevent destruction of the motor.



Details of E2 control panel with integrated humidity and temperature sensor inside for management of pause/work times.

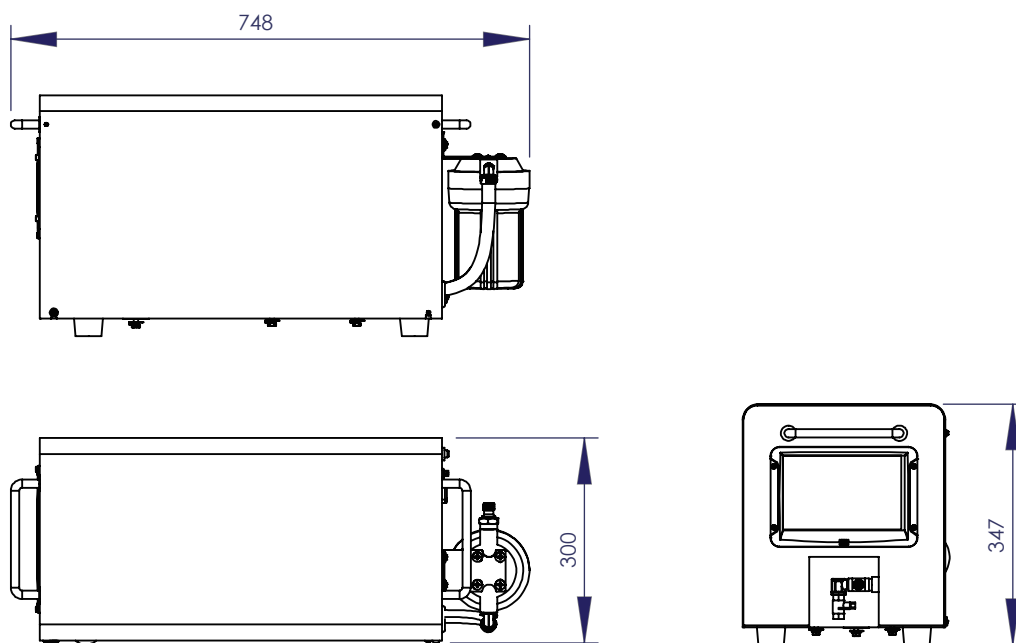


Details of control panel waterproof box for safety purpose.

Features

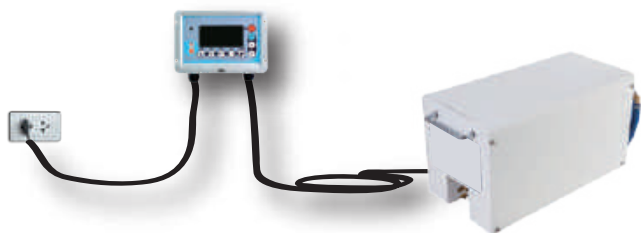
1. Reminder of 300hrs. maintenance interval.
2. Automatic counting for total running hrs.
3. Infrared Transmission Remote Control.
4. Temperature & Humidity Monitoring.
5. LCD Control Panel : Programmable from seconds to weeks.
6. Optional Pressure Auto-Release : Pressure auto-release discharges pressure inside the pipe to prevent the nozzle from dripping.
7. Filtration: Filtering residue to reduce blockages in the nozzle.
8. Solenoid Valve : Stop water inlet during downtime to increase the life of the pump.
9. Overload Protector : Automatic shutdown when current is overloaded to prevent damage to the pump.
10. TECF Pump Motor : Totally enclosed motor ensures electric safety from moisture.

Dimensions



Optional

E2 control panel with extension cable is available at 5,10,20m.



Package dimensions










Model	LxWxH
Grand-cool	764x327x379

Unit: mm

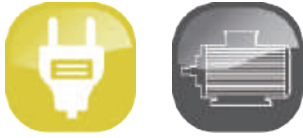
P.S.

- 1.NS pumps can be replaced by NL pumps at request.
- 2.When an NL pump is applied , the spec. can be referred back to NL pumps.

Model								
	l/min	psi	bar	Hp	rpm	Volt/Hz	kg	0.15 mm
Grand-cool 6	5.2	1000	70	1.0	1450	200V~240V 50Hz	36	66
Grand-cool 8	6.8			2.0	1450	200V~240V 50Hz	37	80
Grand-cool 6	6.3			1.0	1750	200V~240V 60Hz	36	86
Grand-cool 8	8.2			2.0	1750	200V~240V 60Hz	37	104

Grand-cool-SS stainless steel version

Systematic misting machine



Details of water filtering system used to prevent nozzles from clogging and motor overload protector to limit the winding temperature to safe values and prevent destruction of the motor.



Details of control panel waterproof box for safety purpose.



Details of E2 control panel with integrated humidity and temperature sensor inside for management of pause/work times.

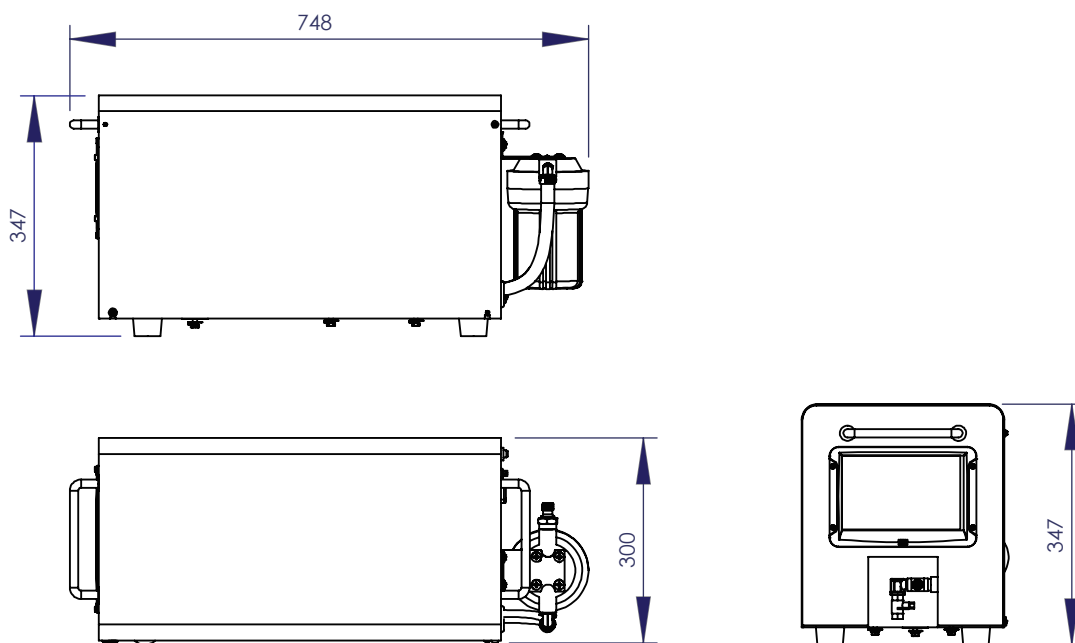


Pump head and internal components made of stainless steel which can stand different kinds of chemical.

Features

1. Reminder of 300hrs. maintenance interval.
2. Automatic counting for total running hrs.
3. Infrared Transmission Remote Control.
4. Temperature & Humidity Monitoring.
5. LCD Control Panel : Programmable from seconds to weeks.
6. Optional Pressure Auto-Release : Pressure auto-release discharges pressure inside the pipe to prevent the nozzle from dripping.
7. Filtration : Filtering residue to reduce blockages in the nozzle.
8. Solenoid Valve : Stop water inlet during downtime to increase the life of the pump.
9. Overload Protector : Automatic shutdown when current is overloaded to prevent damage to the pump.
10. TECF Pump Motor : Totally enclosed motor ensures electric safety from moisture.

Dimensions



Optional

E2 control panel with extension cable is available at 5,10,20m.



Package dimensions









Model	LxWxH
Grand-cool-SS	764x327x379

Unit: mm

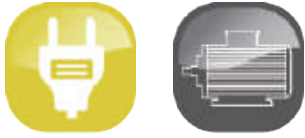
PS.

- 1.NS pumps can be replaced by NL pumps at request.
- 2.When an NL pump is applied , the spec. can be referred back to NL pumps.

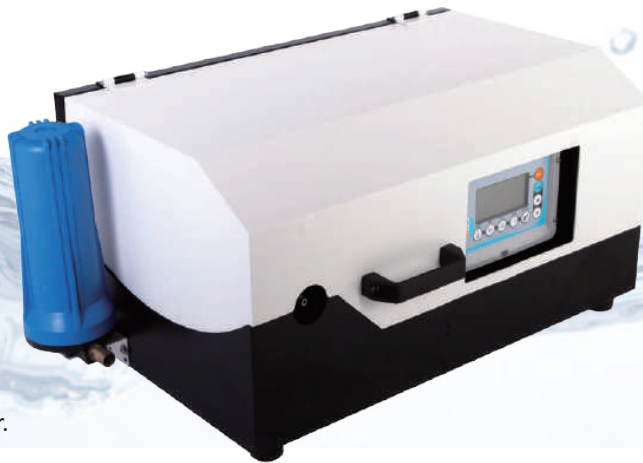
Model								
	l/min	psi	bar	Hp	rpm	Volt/Hz	kg	0.15 mm
Grand-cool 6 SS	5.2	1000	70	1.0	200V~240V 50Hz	1450	36	66
Grand-cool 8 SS	6.8			2.0	200V~240V 50Hz	1450	37	80
Grand-cool 6 SS	6.3			1.0	200V~240V 60Hz	1750	36	86
Grand-cool 8 SS	8.2			2.0	200V~240V 60Hz	1750	37	104

Mega-cool

Systematic misting machine



Details of water filtering system used to prevent nozzles from clogging and motor overload protector to limit the winding temperature to safe values and prevent destruction of the motor.



Clamshell cover for easy inspection and maintenance.



The heat of motor is able to be emitted through the ventilation holes and there are also water drain holes cut the bottom.



Details of anti-vibration mount to greatly reduce vibration and noise during operation .



High-strength stainless steel quick coupling for easy disassembly.

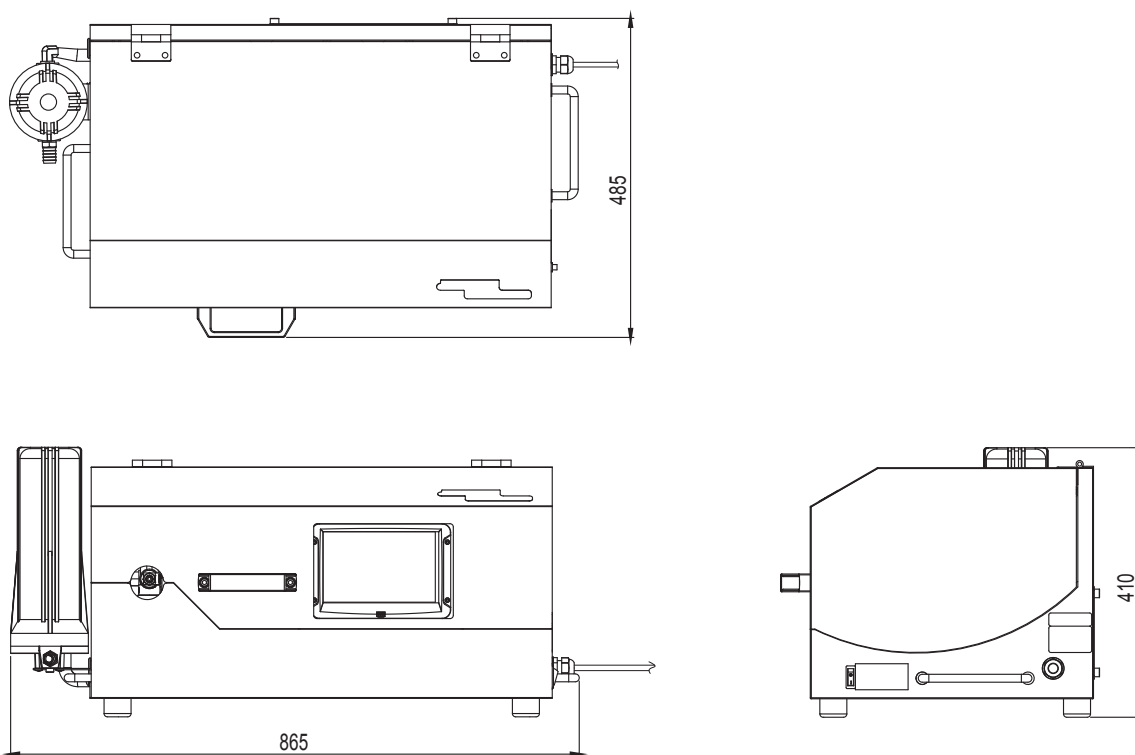


Details of E2 control panel with integrated humidity and temperature sensor inside for management of pause/work times.

Features

1. Reminder of 300hrs. maintenance interval.
2. Automatic counting for total running hrs.
3. Infrared Transmission Remote Control.
4. Temperature & Humidity Monitoring.
5. LCD Control Panel : Programmable from seconds to weeks.
6. Optional Pressure Auto-Release : Pressure auto-release discharges pressure inside the pipe to prevent the nozzle from dripping.
7. Filtration : Filtering residue to reduce blockages in the nozzle.
8. Solenoid Valve : Stop water inlet during downtime to increase the life of the pump.
9. Overload Protector : Automatic shutdown when current is overloaded to prevent damage to the pump.
10. TECF Pump Motor : Totally enclosed motor ensures electric safety from moisture.

Dimensions



Optional

E2 control panel with extension cable is available at 5,10,20m.

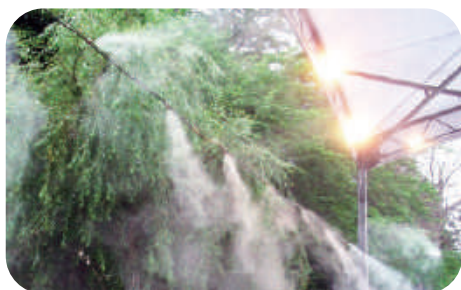


Package dimensions



Model	L×W×H
Mega-cool	900×490×500

Unit: mm



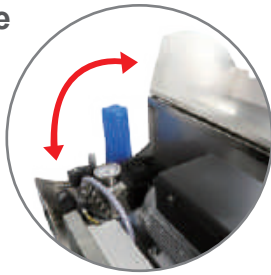
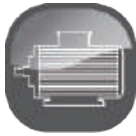
Model								
	l/min	psi	bar	Hp	rpm	Volt/Hz	kg	0.15 mm
Mega-cool 12	10.7	1000	70	2	1450	220V/50Hz	M1: 63 M3: 62.5	136
Mega-cool 16	16			3			M1: 63 M3: 62.5	203
Mega-cool 20	21.5			4			M3: 64.5	273
Mega-cool 25	24.8			5			M3: 64.5	315
Mega-cool 12	11.1	1000	70	2	1750	220V/60Hz	M1: 63 M3: 62.5	141
Mega-cool 16	16			3			M1: 63 M3: 62.5	203
Mega-cool 20	21.9			4			M3: 64.5	279
Mega-cool 25	25.9			5			M3: 69.5	329

P.S. Mega-cool-20 Mega-cool-25 would only equipped with 3- phase motor.



Mega-cool-SS stainless steel version

Systemic misting machine



Clamshell cover for easy inspection and maintenance.



Stainless pump head and internal components made of stainless steel which can stand different kinds of chemical.



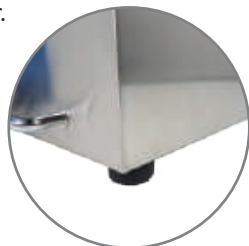
Details of water filtering system used to prevent nozzles from clogging and motor overload protector to limit the winding temperature to safe values and prevent destruction of the motor.



The heat of motor is able to be emitted through the ventilation holes and there are also water drain holes at the bottom.



Details of E2 control panel with integrated humidity and temperature sensor inside for management of pause/work times.

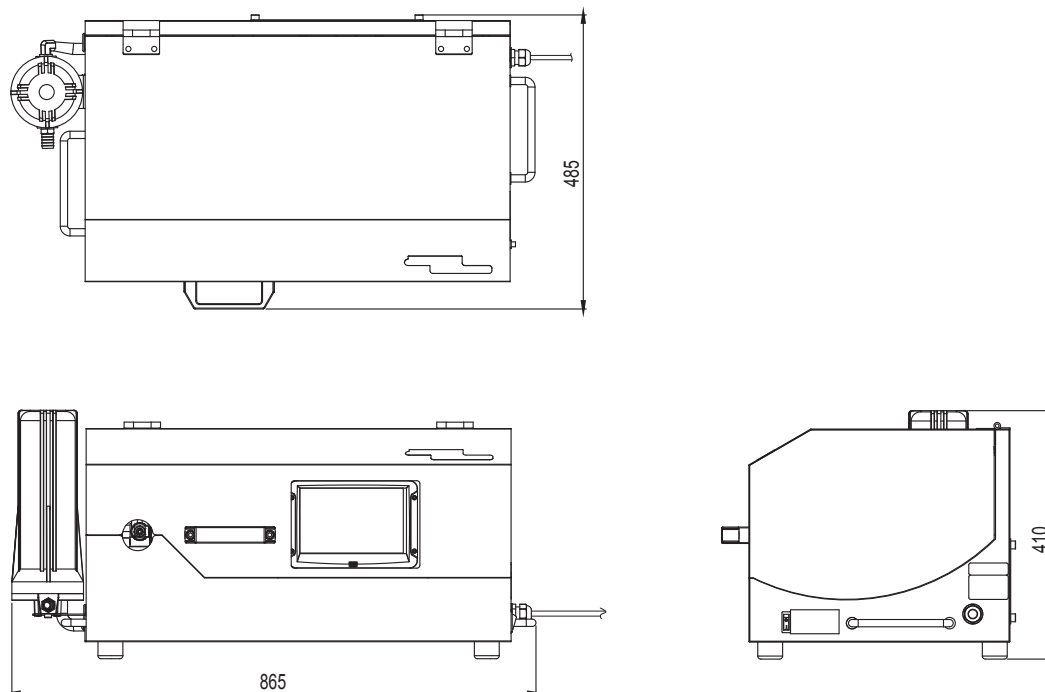


Details of anti-vibration mount to greatly reduce vibration and noise during operation .

Features

1. Reminder of 300hrs. maintenance interval.
2. Automatic counting for total running hrs.
3. Infrared Transmission Remote Control.
4. Temperature & Humidity Monitoring.
5. LCD Control Panel : Programmable from seconds to weeks.
6. Optional Pressure Auto-Release : Pressure auto-release discharges pressure inside the pipe to prevent the nozzle from dripping.
7. Filtration : Filtering residue to reduce blockages in the nozzle.
8. Solenoid Valve : Stop water inlet during downtime to increase the life of the pump.
9. Overload Protector : Automatic shutdown when current is overloaded to prevent damage to the pump.
10. TECF Pump Motor : Totally enclosed motor ensures electric safety from moisture.

Dimensions



Optional

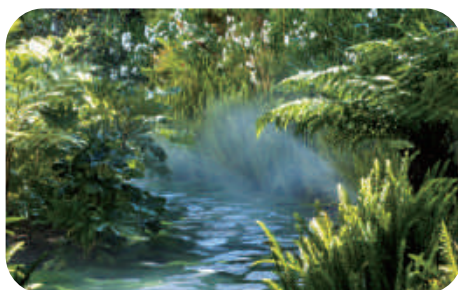
E2 control panel with extension cable is available at 5,10,20m.



Package dimensions

Model	LxWxH
Mega-cool-SS	900x490x500

Unit: mm



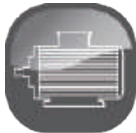
Model								
	l/min	psi	bar	Hp	rpm	Volt/Hz	kg	0.15 mm
Mega-cool-12 SS	10.7	1000	70	2	1450	220V/50Hz	M1: 63 M3: 62.5	136
Mega-cool-16 SS	16			3			M1: 63 M3: 62.5	203
Mega-cool-20 SS	21.5			4			M3: 64.5	273
Mega-cool-25 SS	24.8			5			M3: 64.5	315
Mega-cool-12 SS	11.1	1000	70	2	1750	220V/60Hz	M1: 63 M3: 62.5	141
Mega-cool-16 SS	16			3			M1: 63 M3: 62.5	203
Mega-cool-20 SS	21.9			4			M3: 64.5	279
Mega-cool-25 SS	25.9			5			M3: 69.5	329

P.S. Mega-cool-20 SS, Mega-cool-25 SS would only equipped with 3- phase motor.

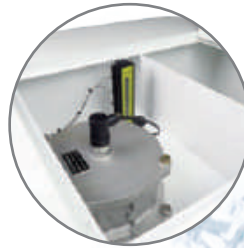


Jumbo-cool

Systemic misting machine



Clamshell style of water tank made of stainless steel for easy inspection and maintenance.



Details of level switch and high flow rate strainer.



Details of different kinds of warning indicator.



Heat is able to be emitted through the ventilation holes.



Details of leveling feet and caster.

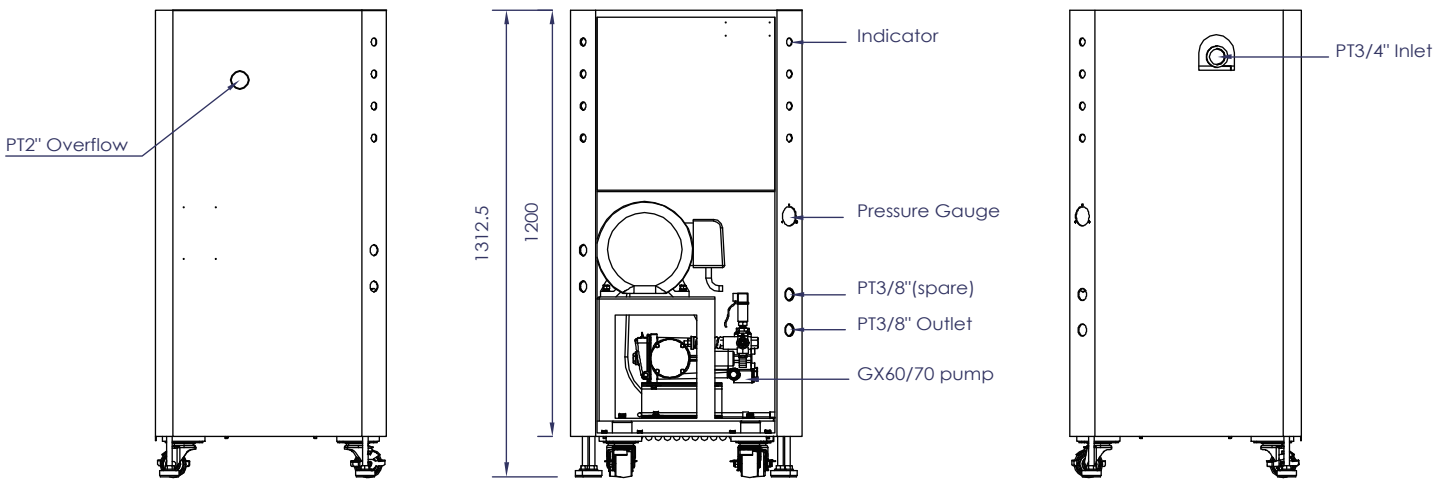
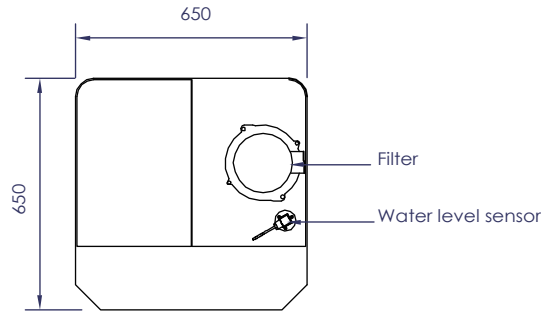


Details of anti-vibration mount to greatly reduce vibration and noise during operation .

Features

1. The functions of control system can be customized at request.
2. Optional Pressure Auto-Release : Pressure auto-release discharges pressure inside the pipe to prevent the nozzle from dripping.
3. Filtration : Filtering residue to reduce blockages in the nozzle.
4. Solenoid Valve : Stop water inlet during downtime to increase the life of the pump.
5. Overload Protector : Automatic shutdown when current is overloaded to prevent damage to the pump.
6. TECF Pump Motor : Totally enclosed motor ensures electric safety from moisture.

Dimensions









Package dimensions



Model	LxWxH
Jumbo-cool-35	800x800x1450

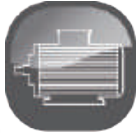
Unit: mm

Model							
	l/min	psi	bar	Hp	rpm	Volt/Hz	kg
Jumbo-cool 35	36.2	1000	70	7.5	875	100V~240V 50/60Hz	300

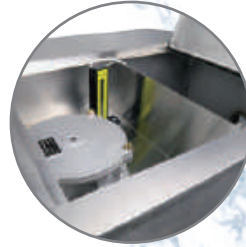
Jumbo-cool-SS

stainless steel version

Systemic misting machine



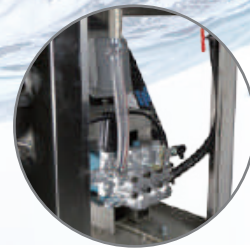
Clamshell style of water tank made of stainless steel for easy inspection and maintenance.



Details of level switch and high flow rate strainer.



Details of different kinds of warning indicator.



Pump head and internal components made of stainless steel which can stand different kinds of chemical.



Details of leveling feet and caster.

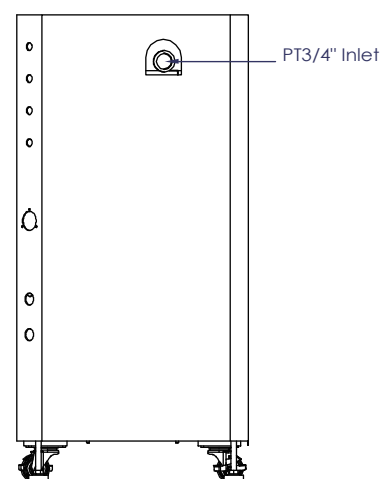
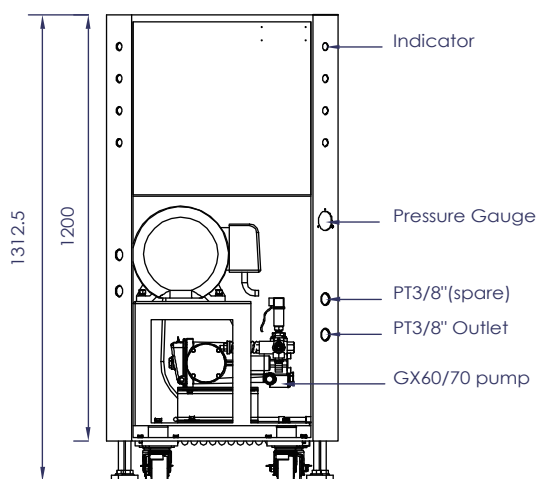
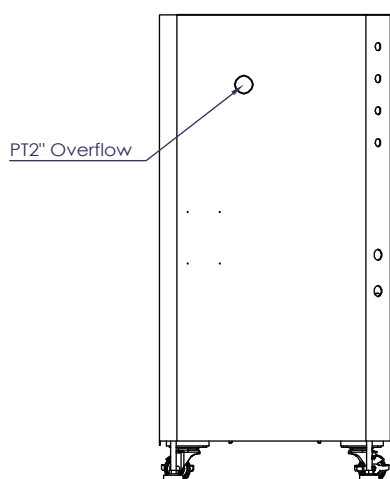
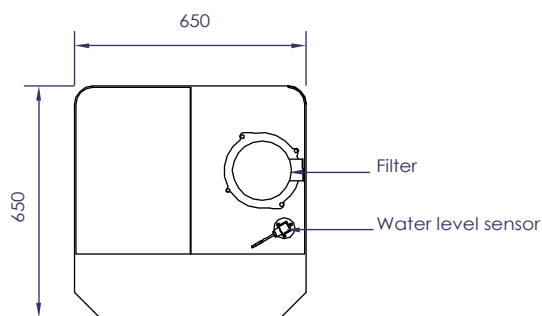


Heat is able to be emitted through the ventilation holes.

Features

1. The functions of control system can be customized at request.
2. Optional Pressure Auto-Release : Pressure auto-release discharges pressure inside the pipe to prevent the nozzle from dripping.
3. Filtration : Filtering residue to reduce blockages in the nozzle.
4. Solenoid Valve : Stop water inlet during downtime to increase the life of the pump.
5. Overload Protector : Automatic shutdown when current is overloaded to prevent damage to the pump.
6. TECF Pump Motor : Totally enclosed motor ensures electric safety from moisture.

Dimensions



Package dimensions



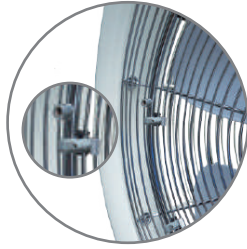
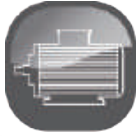
Model	LxWxH
Jumbo-cool 35 SS	800x800x1450

Unit: mm

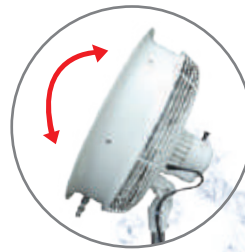
Model							
	l/min	psi	bar	Hp	rpm	Volt/Hz	kg
Jumbo-cool 35 SS	36.2	1000	70	7.5	875	100V~240V 50/60Hz	300

Air-cool

Systemic misting machine



Galvanized front mesh with double painted back mesh: Enables easy replacement of the fan head.



The new construction of fan head is fixed in a new style, which is more secure and durable than ever.



Fan motor with IP53 waterproof rated design.



High-strength stainless steel quick coupling for easy disassembling.



Adjustable stainless steel tube for the height.



Details of off-road use wheels that passed 4 km durability test.



Details of E1 control panel with 4 pre-programmed misting modes including one variable fan speed knob.

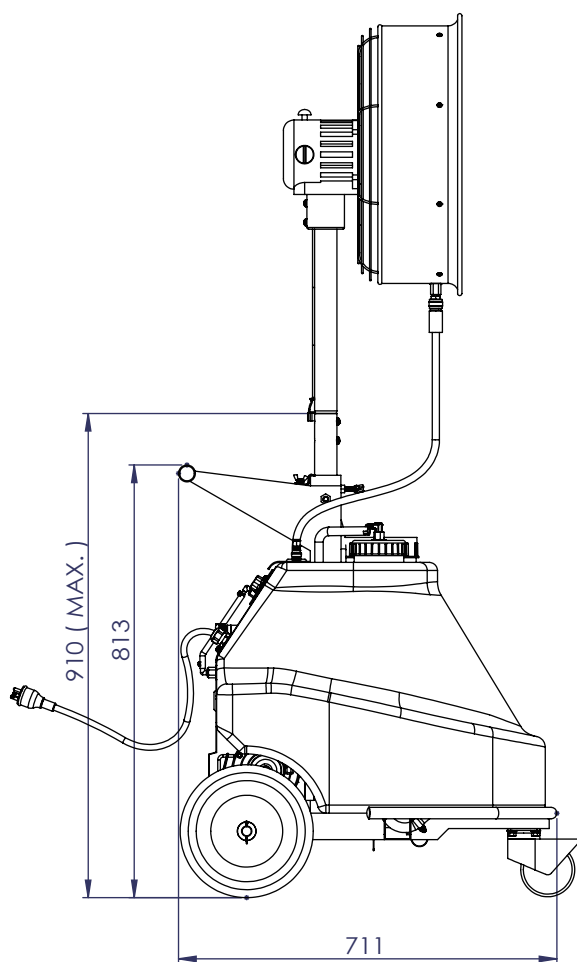
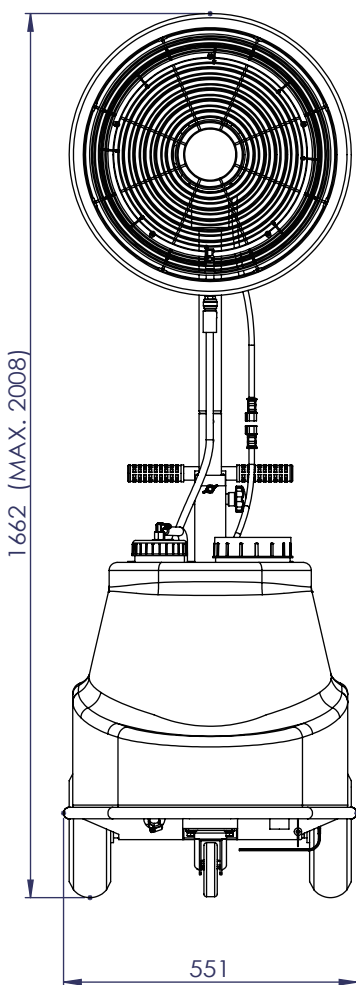


Details of water filtering system before inlet to prevent nozzle from clogging.

Features

1. Water tank : Workable without constant water supply, max.65L.
2. Digital control Panel : 4 pre-programmed modes.
3. Drought Switch : Automatic shutdown and alarm when water supply is interrupted to protect the pump.
4. Solenoid valve : Stop water inlet during downtime to increase the life of the pump.
5. Optional Pressure Auto-Release : Discharges pressure inside the pipe to prevent the nozzle from dripping .
6. TEFC Pump Motor : Totally enclosed motor ensures electric safety from moisture.
7. Overload projector : Automatic shutdown when the current is overloaded to prevent damage to the pump.

Dimensions



Package dimensions



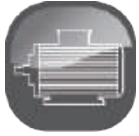
Model	LxWxH
Air-cool	76.5x60.5x123

Unit: mm

Model								
	l/min	psi	bar	Hp	rpm	Volt/Hz	kg	0.15 mm
Air-cool STD	1.1	1000	70	1/3	1450	110V/50Hz	48	5
	1.3	1000	70	1/3	1750	110V/60Hz	48	5

Air-cool Junior

Systemic misting machine



Bionic design of fan blades, using surface recesses to reduce noise and backflow.



The new construction of fan head is fixed in a new style, which is more secure and durable than ever.



Fan motor with IP53 waterproof rated design.



Comfortable rubber grip , non-slip, and durable.



Touch panel for 4 pre-programmed modes .



Details of locking caster.



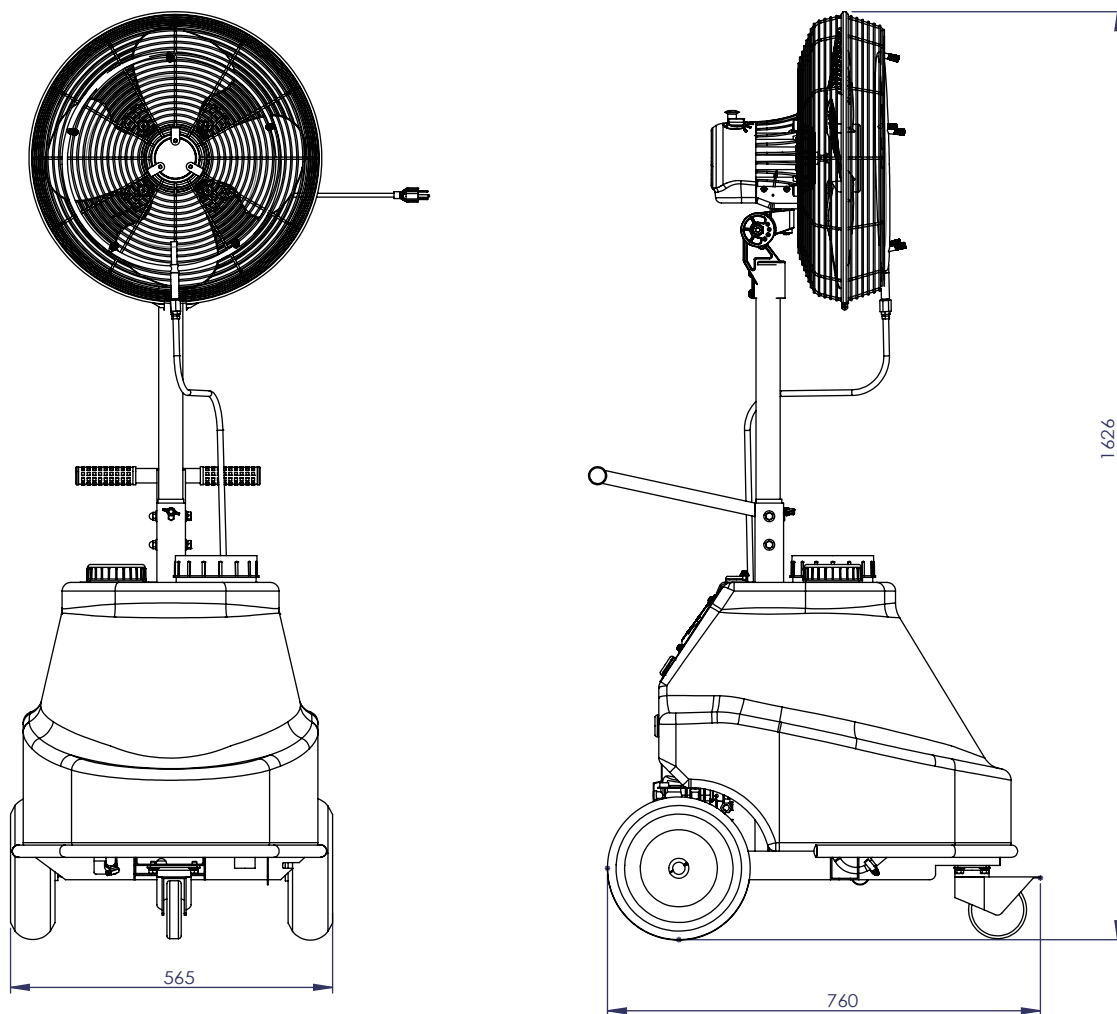
Details of off-road use wheels that passed 4 km durability test.



Features

1. Water tank : Workable without constant water supply, max. 65L.
2. Digital control Panel : 4 pre-programmed modes.
3. Drought Switch : Automatic shutdown and alarm when water supply is interrupted to protect the pump.
4. Solenoid valve : Stop water inlet during downtime to increase the life of the pump.
5. Optional Pressure Auto-Release : Discharges pressure inside the pipe to prevent the nozzle from dripping .
6. TEFC Pump Motor : Totally enclosed motor ensures electric safety from moisture.
7. Overload projector : Automatic shutdown when the current is overloaded to prevent damage to the pump.

Dimensions



Package dimensions

Model	LxWxH
Air-cool junior	940x580x710

Unit: mm

Model								
	l/min	psi	bar	Hp	rpm	Volt/Hz	kg	0.15 mm
Air-cool Junior	0.5	725	50	12V DC 150W	1050	100V~240V 50/60Hz	36.5	4

Misting towers

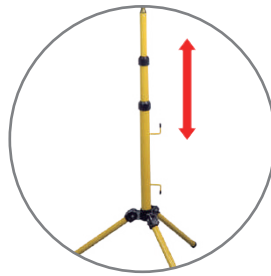


Type A

Type B



High-strength stainless steel quick coupling for easy disassembling.



Adjustable tube for the height.



Secure connections at any joint to be free from movement and shake.





Mist food

diamond

Get Your Own Diamond



Mist food

FRESHNESS!!

HEALTHY!!

A great way to preserve the freshness of food

We offer solution to preserve the freshness of food such as vegetables, or fruits.

The humidification system prevents the food dehydration using filtered water sprayed through nozzles.

It can also prolong the shelf-life of meat, vegetables, or fruits by supplying them enough moisture to reduce their weight loss and preserves their fresh appearance.

We make it possible to reduce product weight loss up to 50% and increase sales.

Products stay fresh as just harvested from the field

Our humidification system for display counters that prevents dehydration of meat, vegetables, fruits and so on.

The solution to avoid dehydration can reduce the food weight loss and prolong freshness up to 72 hours.

When food is stored at low-humidity environments (50-60%), this will cause the rapid deterioration of most fruits and vegetables.

Their appearance will turn not be attractive and weight will be lighter so as to influence the sales.

On the contrary, if food is maintained at the right humidity level during display or storage, it will look just harvested with nice and fresh surface.

Mist food

The Benefits



The below graphs compare 5°C refrigerated environments that are not preserved correctly with those that are perfectly humidified.

Items	Typical daly weight loss	Daly weight loss with Mini food	Ruduce in weight loss	Change in apperance
Broccoli	7.5%	0.8%	90.0%	
Cabbage	1.4%	0.3%	80.0%	
Cauliflower	2.0%	0.4%	80.0%	
Celery	3.0%	1.3%	58.1%	
Lettuce	7.0%	0.9%	87.0%	
Peach	3.4%	4.0%	34.0%	
Strawberry	2.5%	1.0%	54.2%	
Tomato	0.2%	0.1%	69.3%	

Reasons for choosing Mini food misting system



Up to 50% savings compared to other systems.



Up to 80% less maintenance than other competing systems.



Low energy consumption.



Pressure auto-release discharges pressure inside the pipe to prevent nozzle dripping.



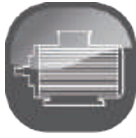
Built-in disinfection system to make your display counter even healthier.



Mist-food-Mini

stainless steel version

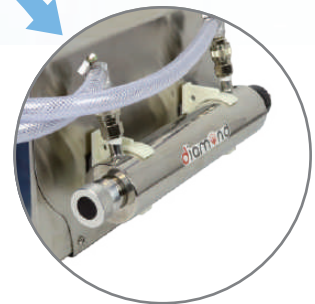
Systematic misting machine



Water filtering system used to prevent nozzles from clogging.



Stainless pump head and internal components made of stainless steel which can stand different kinds of chemical.

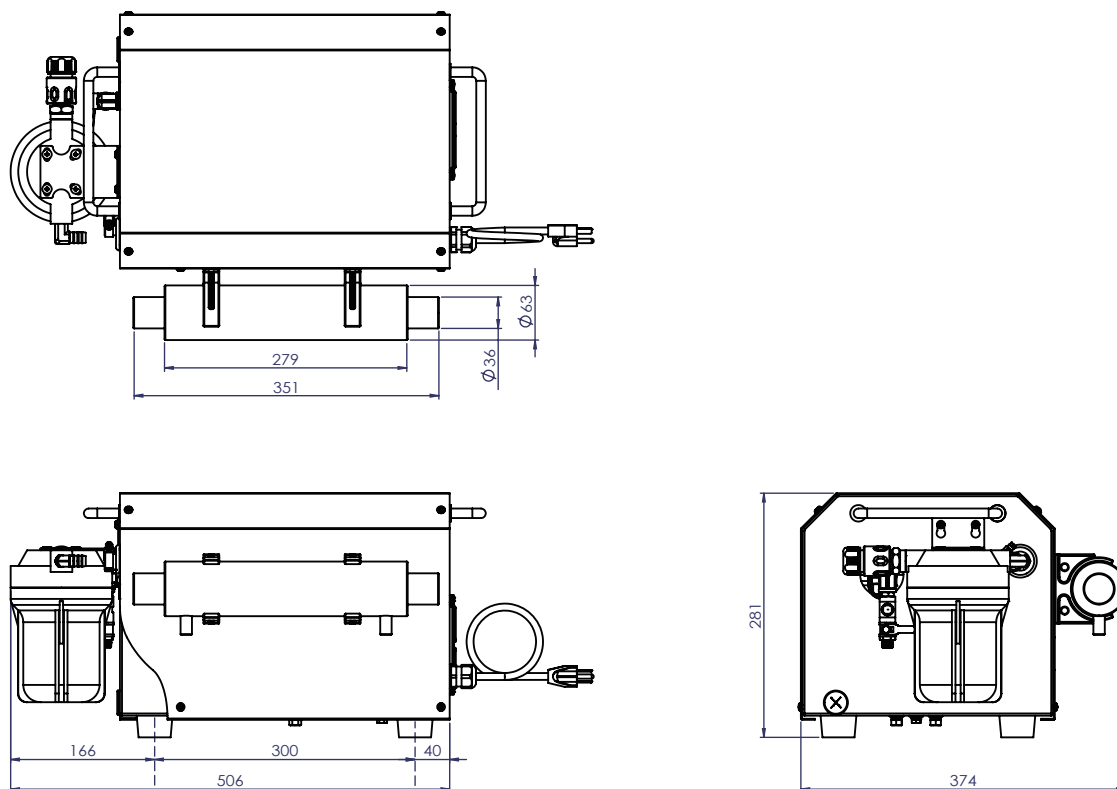


UV lamp can eliminate bacteria and microorganisms in the water.

Features

1. Classic stainless steel casing design.
2. Digital control Panel : 4 pre-programmed modes.
3. Drought Switch : automatic shutdown and alarm when water supply is interrupted to protect the pump.
4. Solenoid valve : stop water inlet during downtime to increase the life of the pump.
5. Optional Pressure Auto-Release : Discharges pressure inside the pipe to prevent the nozzle from dripping .
6. TEFC Pump Motor : Totally enclosed motor ensures electric safety from moisture.
7. Overload Protector : Automatic shutdown when current is overloaded to prevent damage to the motor.

Dimensions



Package dimensions

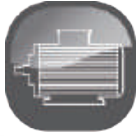


Model	LxWxH
Mini-food-SS	610x430x330

Unit: mm

Model								
	l/min	psi	bar	Hp	rpm	Volt/Hz	kg	0.15 mm
Mini-food-1 SS	1.1	1000	70	1/3	26.1	100~240V 50Hz	1450	15
Mini-food-1 SS	1.3			1/3	26.1	100~240V 60Hz	1750	18
Mini-food-2 SS	2.0			1/2	27.5	100~240V 50Hz	1450	28
Mini-food-2 SS	2.5			1/2	27.5	100~240V 60Hz	1750	35

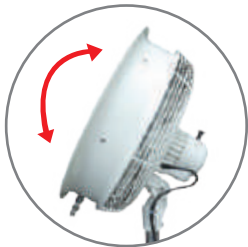
Fan products



Tripod type



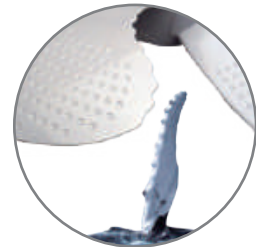
Wall-mounted type



The new construction of fan head is fixed in a new style, which is more secure and durable than ever.

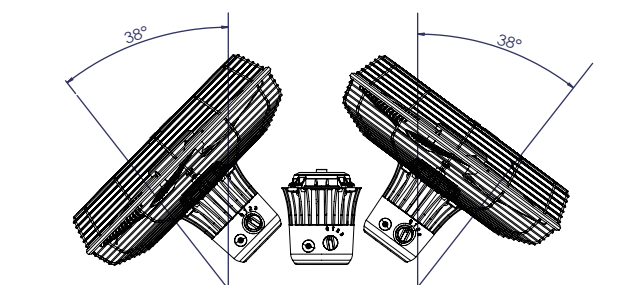


Fan motor with IP53 waterproof rated design.

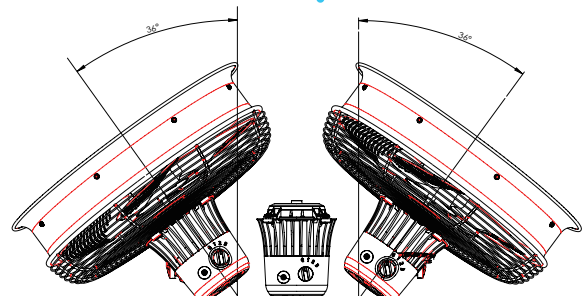


Bionic design of fan blades, using surface recesses to reduce noise and backflow.

Commercial fan



Misting fan



Commercial fan



Fan A

Misting fan



Fan B



Fan C

Tripod type



Type D



Type E

Wall-mounted type



Type F



Type G

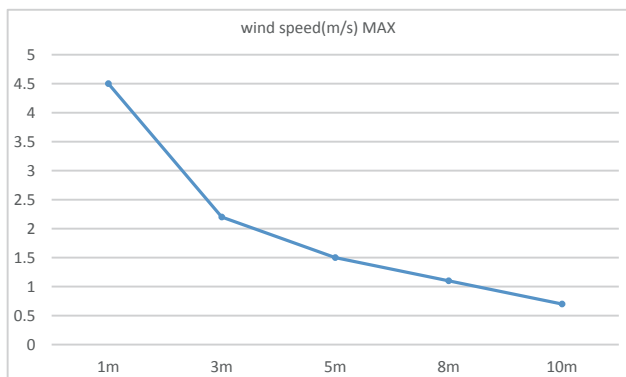


Type H

Technical test

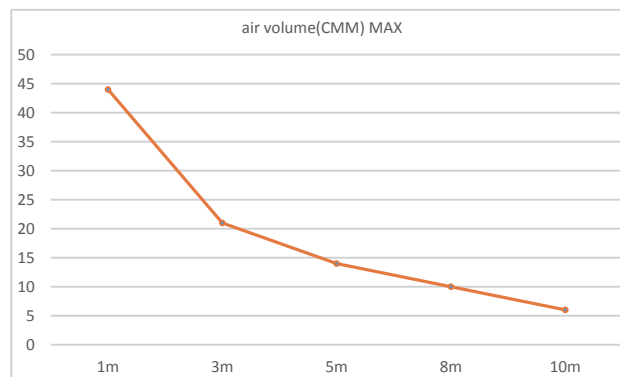
wind speed

meter	1m	3m	5m	8m	10m
(m/s)	4.5	2.2	1.5	1.1	0.7



air volume

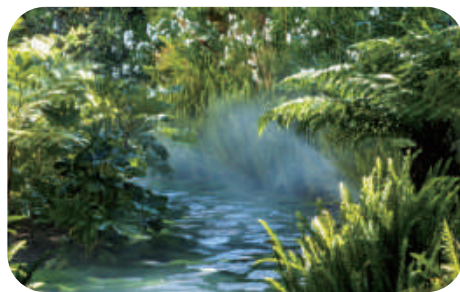
meter	1m	3m	5m	8m	10m
CMM	44	21	14	10	6



The above test data is based on fan C type only

Accessories

Fogging nozzles



Features

1. Precise CNC lathe ensures best quality.
2. Durability & Anti-drip design.

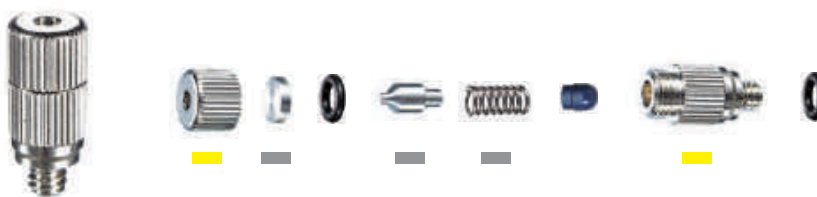
Material: Brass body & Stainless steel orifice
 Thread: 10/24 unc
 Optional stainless steel nozzles are available.

TND type



Model	Orifice Diameter		35 kg/cm ²	50 kg/cm ²	70 kg/cm ²
	mm	inch	c.c	c.c	c.c
TND-01	0.15	0.006	37.8	45	55
TND-02	0.20	0.008	60.8	72	84
TND-03	0.30	0.012	86.2	102	127
TND-04	0.40	0.016	140	166	207
TND-05	0.50	0.020	180.8	214	259
TND-06	0.60	0.024	240	285	345

TNS type



TNK type



Stainless steel
 Brass+plating

Model	Orifice Diameter		35 kg/cm ²	50 kg/cm ²	70 kg/cm ²
	mm	inch	c.c	c.c	c.c
TNS-01/TNK-01	0.15	0.006	33	40	47
TNS-02/TNK-02	0.20	0.008	44	56	66
TNS-03/TNK-03	0.30	0.012	76	91	108
TNS-04/TNK-04	0.40	0.016	110	123	146
TNS-05/TNK-05	0.50	0.020	139	156	185

Accessories

Slip lock connectors



STEP 1



STEP 2

Slip lock (1-hole)

Models	SL-1
specification	1/4" x 10-24unc x 1 side
	3/8" x 10-24unc x 1 side



Slip lock (2-hole x 180°)

Models	SL-2
specification	1/4" x 10-24unc x 2 side
	3/8" x 10-24unc x 2 side



Accessories

Slip lock connectors

Slip lock connector

Models	SL-3
specification	1/4"
	3/8"



Transform male slip lock

Models	SL-4
specification	1/4" x PT1/4"
	3/8" x PT3/8"



Transform female slip lock

Models	SL-5
specification	1/4" x PT1/4"
	3/8" x PT3/8"



Slip lock end

Models	SL-6
specification	1/4"
	3/8"



Accessories

Slip lock connectors

Slip lock end (1-hole)

Models	SL-7
specification	1/4" x 10-24unc x 1 side
	3/8" x 10-24unc x 1 side



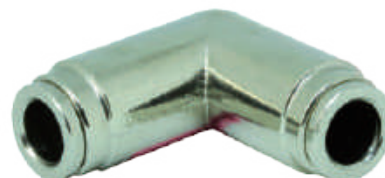
Slip lock end (1 side x 90°)

Models	SL-8
specification	1/4" x 10-24unc x 1 side (90°)
	3/8" x 10-24unc x 1 side (90°)



L type slip lock

Models	SL-9
specification	1/4"
	3/8"



T type slip lock

Models	SL-10
specification	1/4"
	3/8"



Accessories

Slip lock coupling valves

Slip lock coupling valve (male)

Models	SL-11
specification	3/8" × 13.8/18 UNF



Slip lock coupling valve (female)

Models	SL-12
specification	3/8" × 13.8/18 UNF



Slip lock coupling valve

Models	SL-13
specification	1/4"
	3/8"



Accessories

Slip lock accessories

Nylon pipe

Models	SL-14
specification	1/4" × 100M/200M
	3/8" × 100M/200M



Tubing fitting

Models	SL-15
specification	3/8"



Tubing cutter

Models	SL-16
specification	-



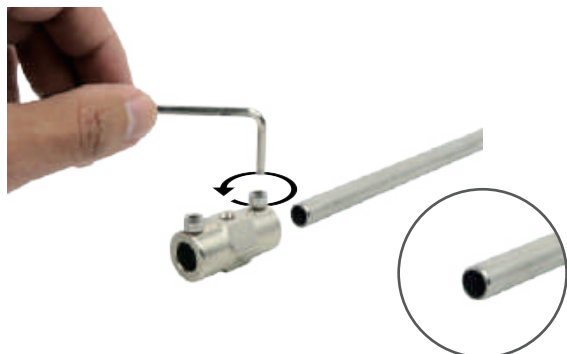
Transform connector

Models	SL-17
specification	PT1/4" × PH1/4"



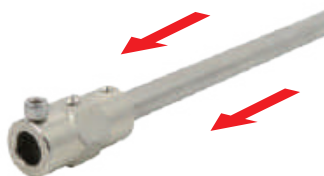
Accessories

Plug-in couplings



STEP 1

The surface should be clear without burrs.



STEP 2



STEP 3



STEP 4

Plug-in coupling (no hole)

Models	SS-1
specification	3/8"



Plug-in coupling (1-hole)

Models	SS-2
specification	3/8" x 10-24unc x 1 side



Accessories

■ Plug-in couplings

Plug-in coupling (2 side×120°)

Models	SS-3
specification	3/8" × 10-24unc × 2 side(120°)



Plug-in coupling (2 side×180°)

Models	SS-4
specification	3/8" × 10-24unc × 2 side(180°)



L type plug-in coupling

Models	SS-5
specification	3/8" × 2 side



T type plug-in coupling

Models	SS-6
specification	3/8" × 3 side



Accessories

■ Plug-in couplings

Cross plug-in coupling

Models	SS-7
specification	1/4" x 10-24unc x 1 side



End plug-in coupling

Models	SS-8
specification	3/8"



End plug-in coupling (1-hole)

Models	SS-9
specification	3/8" x 10-24unc x 1 side



End plug-in coupling (2 hole x 120°)

Models	SS-10
specification	3/8" x 10-24unc x 2 side (120°)



Accessories

■ Plug-in couplings

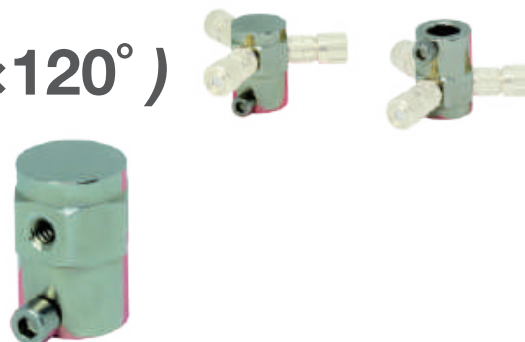
End plug-in coupling (2 hole×180°)

Models	SS-11
specification	3/8" × 10-24unc × 2 side (120°)



End plug-in coupling (3 hole×120°)

Models	SS-12
specification	3/8" × 10-24unc × 3 side (120°)



End plug-in coupling (1-hole)

Models	SS-13
specification	3/8" × 10-24unc × 3 side (120°)



Accessories

■ Plug-in couplings

End plug

Models	SS-14
specification	3/8"



End plug

Models	SS-15
specification	1/4" x NO10-24unc x 1 side



End plug

Models	SS-16
specification	3/8"



Accessories

Plug-in couplings

Nozzle stand plug

Models	SS-17
specification	10/24 unc



Ending plug

Models	SS-18
specification	3/8"



Front connector

Models	SS-19
specification	3/8"



Front connector (single hole)

Models	SS-20
specification	3/8" x PT1/4"



Accessories

Plug-in accessories

High pressure hose

Models	SS-21
specification	1/8" x PH1/4"-1M/ 1.5M / 2M
	1/8" x Plug-in -1M/ 1.5M / 2M



Stainless steel pipe

Models	SS-22
specification	3/8" - 1M /1.5M / 2M



Transform connector

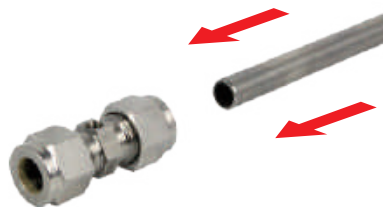
Models	SS-23
specification	PH1/4" x3/8" Plug-in



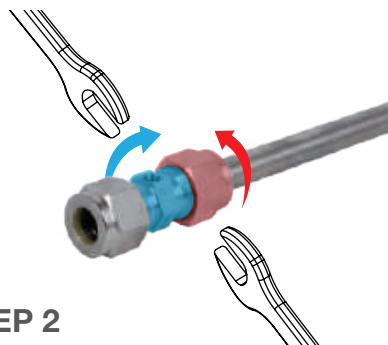
Accessories

Compression fitting

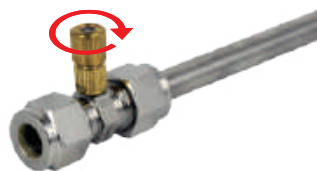
Suitable: Copper tubing 3/8"(9.5mm), Stainless steel tubing 3/8"(9.5mm), HDPE tubing 3/8"(9.5mm), Nylon tubing 3/8 "(9.5mm)



STEP 1



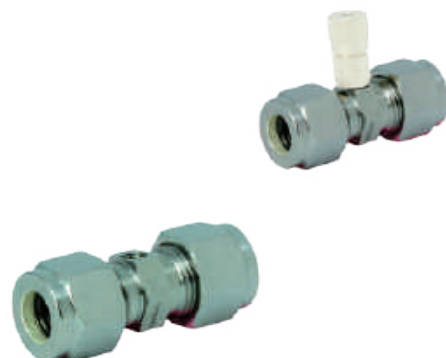
STEP 2



STEP 3

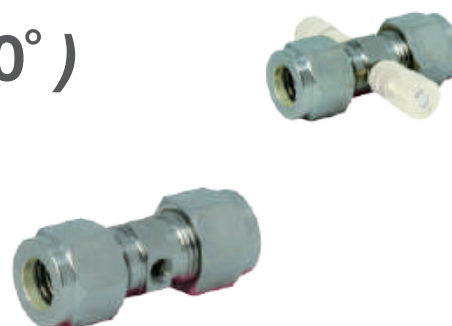
Compression fitting (1-hole)

Models	OD-1
specification	1/4" × 10-24unc × 1 side
	3/8" × 10-24unc × 1 side



Compression fitting (2-hole × 180°)

Models	OD-2
specification	1/4" × 10-24unc × 2 side(180°)
	3/8" × 10-24unc × 2 side(180°)



Accessories

Compression fitting

Suitable: Copper tubing 3/8"(9.5mm), Stainless steel tubing 3/8"(9.5mm), HDPE tubing 3/8"(9.5mm), Nylon tubing 3/8 "(9.5mm)

Compression fitting (2-hole×120°)

Models	OD-3
specification	1/4" × 10-24unc × 2 side (120°)
	3/8" × 10-24unc × 2 side (120°)



Compression connector

Models	OD-4
specification	1/4"
	3/8"



Compression male connector

Models	OD-5
specification	1/4" × PT1/4"
	3/8" × PT1/4"



Compression female connector

Models	OD-6
specification	1/4" × PT1/4"
	3/8" × PT1/4"



Accessories

■ Compression fitting

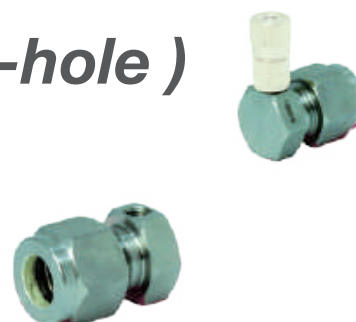
Compression end connector

Models	OD-7
specification	1/4"
	3/8"



End compression connector (1-hole)

Models	OD-8
specification	1/4" x10-24uncx1 side
	3/8" x10-24uncx1 side



L type compression connector

Models	OD-9
specification	1/4"
	3/8"



T type compression connector

Models	OD-10
specification	1/4"
	3/8"
	3/8" x1/4"

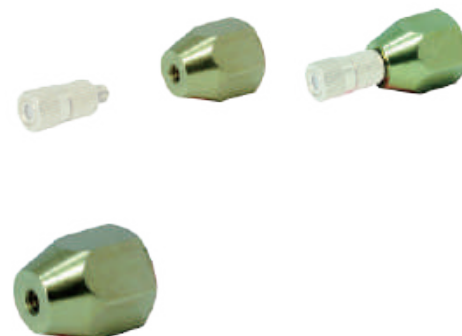


Accessories

■ Nozzle fitting

Nozzle end connector (1-hole)

Models	NF-1
specification	1/4" x 10-24unc x 1 side



Nozzle seat (1-hole)

Models	NF-2
specification	1/4" x 10-24unc x 1 side



Nozzle seat (3-hole)

Models	NF-3
specification	10-24unc x 10-24unc x 3 side (120°)



Nozzle seat (4-hole)

Models	NF-4
specification	1/4" x 10-24unc x 4 side



Accessories

Common Accessoires

Single fog ring

Models	A-1
specification	5 Nozzle holes-10/24 Thread



Flexible nozzle extension

Models	A-2
specification	50/100/150/200/250/300 mm



High pressure hose

Models	A-3
specification	1/4" x PH1/4"-29cm/ 1M / 1.5M



Accessories

Common Accessoires

Quick connector ass'y

(Including sintering filter)

Models	A-4
specification	PH1/4" x PH1/4"



Quick connector ass'y

(Including sintering filter)

Models	A-5
specification	PH1/4" x PT1/4"



Filter

Models	A-6
specification	5" Filter x PP/ Active carbon/ Resins
	10" Filter x PP/ Active carbon/ Resins



Calculation formulas

Hereby, we introduce some of very useful calculations that users of power sprayers need.

A good usage experience has much to do with correct knowledge.

These calculations can help users to find the best setting and selection regarding to power source, spraying accessories and cost structure. Please refer to these information before purchasing related products.

Flow Rate

The theoretical flow rate F_t is represented as the suction volume that a pump can theoretically pump out. The actual flow rate F_r is represented as the real volume pumped by a pump in certain conditions such as operating pressure, liquid category and so on.

The flow rate F_t of a triplex pump is calculated by the following formula.

$$F_t \text{ [l/min]} = \frac{3 \times \pi \times r^2 \text{ [mm]} \times S \text{ [mm]} \times N \text{ [1/min]}}{10^6}$$

r : The radius of the plunger equipped inside the pump.

If it is a piston pump, r is calculated as $(r_b - r_v)$. r_b is represented as the radius of piston bushes. r_v is represented as the radius of valve on the piston.

S : Pump shaft eccentric

N : Rotation speed. Normally presented as RPM

Nozzle number calculation formula

$$\text{Nozzle number} = \frac{\text{Pump flow rate} \times 75\%}{0.05 \text{ LPM}}$$

■ Base on 0.15mm nozzle (flow rate at 0.05 LPM @70 bar)

If use a NS3 misting system with 0.15mm nozzle for a whole-plant designing, then the system can support around 48 nozzles. $(3.2 \text{ LPM} \times 75\% / 0.05 \text{ LPM} = 48)$

Please note that the real situation may vary from case to case.

Calculation formulas

Efficiency

The efficiency of a plunger pump (A so-called positive replacement pump, also include piston type) is identified by three main factors.

- Flow rate
- Operating pressure
- Power required

The efficiency of a pump is observed according to some meaningful ratios calculated from these three factors.

Volumetric Efficiency

The ratio between the theoretical flow rate F_t and the actual flow rate F_r is defined as the volumetric γ_v .

$$\gamma_v = \frac{F_r}{F_t}$$

■ Pressure conversion table

MPa	kPa	Kgf / cm ²	bar	PSI
1	1000	10.1972	10	145.037
0.001	1	0.0102	0.01	0.14503
0.0980665	98.0665	1	0.980665	14.2233
0.1	100	1.0197	1	14.5038
0.00689	6.8948	0.07031	0.06895	1
0.000133	0.1333	0.0013595	0.001333	0.019336

■ Volume conversion table

m ³	L (liter)	in ³ (cu in)	ft ³ (cu ft)	gal (Imp.)	gal (U.S.)
1	1000	61023.61	35.3147	219.9692	264.1722
0.001	1	61.0236	0.03531	0.219969	0.264172
0.0000164	0.0163871	1	0.0005787	0.0036047	0.004329
0.0283168	28.3168	1727.9934	1	6.2288252	7.4805107
0.0045461	4.5461	277.4188	0.1605439	1	1.2009505
0.0037854	3.7854	230.9994	0.1336807	0.8326738	1

Calculation formulas

Nozzle application distance reference table

Application	Nozzle type	Spray effective distance	Nozzle optimal interval setting distance	Hights
Humidify	1	3	50 cm	0 meters above
	2	3	50 cm	
	3	4	50 cm	
	4	5	100 cm	
	5	5	100 cm	
	6	5	150 cm	
Indoor cooling	1	3	100 cm	3m~7m
	2	3	100 cm	
outdoor cooling	1	3	70 cm	1.5m above
	2	3	80 cm	
Landscape	1	3	50 cm	0 meters above
	2	3	50 cm	
	3	4	50 cm	
Deodorization	1	3	100 cm	0 meters above
	2	3	100 cm	
	3	4	80 cm	
Eliminate static electricity	1	3	100 cm	1.5m above
Dust suppression	4	5	-	According to local demand
	5	5	-	
	6	5	-	

1. The number of effective spray distance 4 (7), (7) represents the effective distance of spray after installing the fan
2. The setting height in the table is the best nozzle height recommended by ours for different application methods.
3. The effective distance of the spray can be converted into the distance between two different circuits.
For example, 4 (7) means that the distance between the two circuits must be greater than 8 (14) meters.





High pressure

Cleaning & washing

- Car/bus/truck washing
- Self-service car washing
- Ship washing
- Heavy plant washing
- Off-road vehicle equipment cleaning
- Street cleaning



High pressure

Manufacturing process system

- Machine tool cooling & flushing
- High speed demoulding
- Label removal & de-burring
- Hydrostatic testing
- Conveyor belt cleaning
- Sanitisation



High pressure

Industrial pump

- Fire fighting (misting/foam)
- Reverse osmosis desalination
- Decontamination system
- Vehicle, building & equipment cleaning
- Insect control
- Centralised cleaning systems



High pressure

Misting & cooling

- Wasted water & odour control
- Dust suppression
- Pest control
- Evaporative cooling
- Humidification & temperature control
- Greenhouse misting
- Animal cooling
- Sporting event cooling
- Patio misting



**MORE DIVERSIFIED DAIMOND PRODUCTS
YOU CAN RELEY ON**